

weZee Card

Wifi Drive



Quick installation guide

Package content

Please verify the package content that you have. If something is missing, please feel free to contact your local reseller.



weZee Card



USB Cable USB 3.0



Quick Installation Guide



Mini CD-ROM



Adaptator (5V-1A)

WeZee Card update

For firmware/ software PC & Mac / Applications / Manuals &

Quick Guide...Please visit Storex website : <http://wiidisk.storex.eu/>

WeZee Card details



Port WAN RJ45 : To connect weZee Card to the Internet through Router/Switch

USB 3.0 connector: To transfer data with very high transfer rate and to charge the battery.

Power On/Off : Press during 3 seconds to turn on/off the device.

USB Host : Power Bank Mode; to recharge your smartphones or tablets (weZee'Card turned off), Max power=5V/1A

Reset Button: To set the weZee'Card to factory parameters, press on the button 5 seconds when the weZee'Card is turned off.

LED Battery:

a) Turned off when:

-The device is turned off.

-The battery is completely charged (weZee'Card connected to the power supply).

b) Green to indicate that the battery charging level is OK.

c) Green, blinking slowly (2s) to indicate that the battery is charging.

d) Green, blinking fast (0,5s) to indicate that the unit will power off.

e) Red, blinking slowly to indicate that the battery charge is less than 30%.

f) Red, blinking fast to indicate that the battery is completely discharge.

LED Read/Write :

a) White when the device is connected through USB 2.0

b) Blue when the device is connected through USB 3.0

c) Blink when transferring data.

LED Wi-Fi :

a) Blue, blink when device is in use.

b) Blue when device is ready to use.

LED Wan :

a) Green when the internet connection is ready.

b) Lite off, when internet connection is found.

Charging weZee Disk

Connect the USB cable provided, with the weZee Disk power supply adapter.

The battery level indicator will blink every 2 seconds for the charging time and turns off when fully charged.

Hint : The internal hard disk must be formatted using one of the two file systems: NTFS or FAT32.

Activate/Deactivate

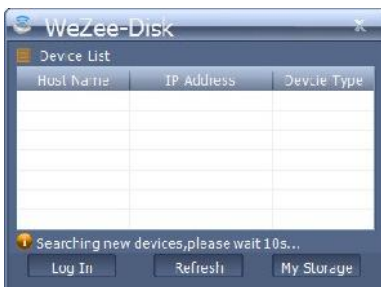
To turn on the weZee'Card, press the power button 3 seconds, located on the front panel. WeZee'Card will start the initialization process. The power light (green) will be followed by the blinking of the LED Wi-Fi (blue color). Once the initialization process is completed, HDD, WiFi and power LEDs remain lit. To turn off the weZee'Card, press the power button 3 seconds and all LEDs will turn off immediately.

Connection to Wi-Fi

WeZee Card is accessible via any type of device: Windows PC, Mac, iPhone / iPad, Tablet PC & Mobile Android via the APPs and the client utility 'WeZee-Card'. Just run a search for Wi-Fi networks, your mobile device or your computer, select and connect to the "WeZeeCard-XXXX" WiFi. Once connected, type the default password 11111111.

Client PC – Connection tools

Use your PC/Mac computer to copy the utility called "WeZee-Card" and follow the instructions on the screen: once the process is complete, double-click on the "WeZee-Card" icon on your desktop to launch the utility. Please do a search weZee'Card (see screenshot below). Select the option "WeZee-Card". Click on the "login" button.



Hint : If the utility does not find the " WeZee-Card " host name with IP 10.10.10.254, click on the button "Refresh".

The Web management interface page appears (see screenshot below): enter "admin" in user name, leave the password area blank (default).



iPhone / iPad / Android Applications

Please download and install the free " WeZee-Disk " Application via: Apple App Store (for iPhone / iPad users). Google Play Store (for Android users). Then, configure your iPhone / iPad, Tablet PC & Mobile Android to connect to the WiFi of WeZee-Card. Launch the "WeZee-Card" applet that will automatically connect to your Disk weZee'Card.



Activate iPhone & iPad Application

Hint : The WeZee'Card integrate its own media player application that decodes any type of video format you have 30 days to authenticate and register your WiFi Disk online by following the process below. After this period, the application WeZee'Disk Video decoding will be disabled. If you wish to reactivate this Video decoding, please follow the processes included in the user manual.

After having downloaded via Apple App Store and installed the free "WeZee-Disk" on your iPhone or iPad Application.



weZee Disk

- 1) Please connect the RJ45 cable from your router to your WeZee'Disk RJ45 port so that it can access the Internet.
- 2) Verify that Wan LED is light on (Green).
- 3) Connect your iPhone or iPad to WiFi weZee Card network.
- 4) Now please start the playback of a Video on your iPhone or iPad to enable the decoding of multimedia application WeZee-Card drive.

STOREX's available guarantee is valid for 1 year for tablet and 3 months long for its accessories (remote control, AV cables, power supply ...).

STOREX guarantees your products against any manufacturing or assembling faults. This guarantee only applies to the first purchase of the tablet by the end user and is not transferable if the device is resold. This warranty does not cover any incompatibilities found by end user apart from recommendations specified on the packaging, or any other incompatibility generated by other hardware or software on the computer that is connected to the tablet.

Proof of purchase must be presented to our services to apply **STOREX** guarantee.

The guarantee doesn't cover failures or defects induced by non-compliance to this manual's instructions, neglect, alteration, improper installation or maintenance, reparation or alteration not authorized by **STOREX**, improper tests, accident or external factor such as (not exhaustive) excessive heat or dampness, power failures or bad installation / uninstalling of tablet.

The only contractual obligation endorsed by **STOREX** pertains to the reparation or replacement of a defective product. In no case, **STOREX** cannot be held responsible for any loss of data, or its consequences induced by operational fault or a product failure. In any case, **STOREX** won't be bound to any financial responsibility for any amount exceeding the value of the product purchased by the end user.

This guarantee is well defined and cannot be modified, decreased or increased without written consent from **STOREX**. In addition, **STOREX** cannot be held responsible for any technical advice or service provided in relation to tablet.

For any request not covered by this guarantee, please contact **STOREX** support or log on to www.e-storex.com to order accessories.

You are not the grantee of this current warranty. This warranty covers only your tablet and is governed by French law.