

# MISE A JOUR EZEE'TAB 10010-S

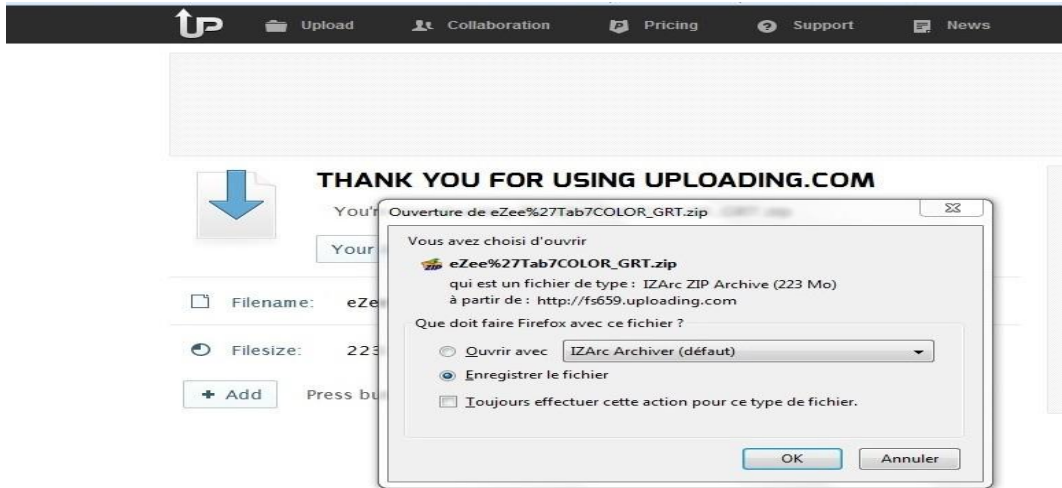
Veillez télécharger le dossier de mise à jour selon le lien suivant :

[www.storex.eu/supportb/download/fw/10010-S\\_A83T\\_N102\\_N1021L1BC\\_20150205.rar](http://www.storex.eu/supportb/download/fw/10010-S_A83T_N102_N1021L1BC_20150205.rar)

Puis le logiciel de mise à jour:

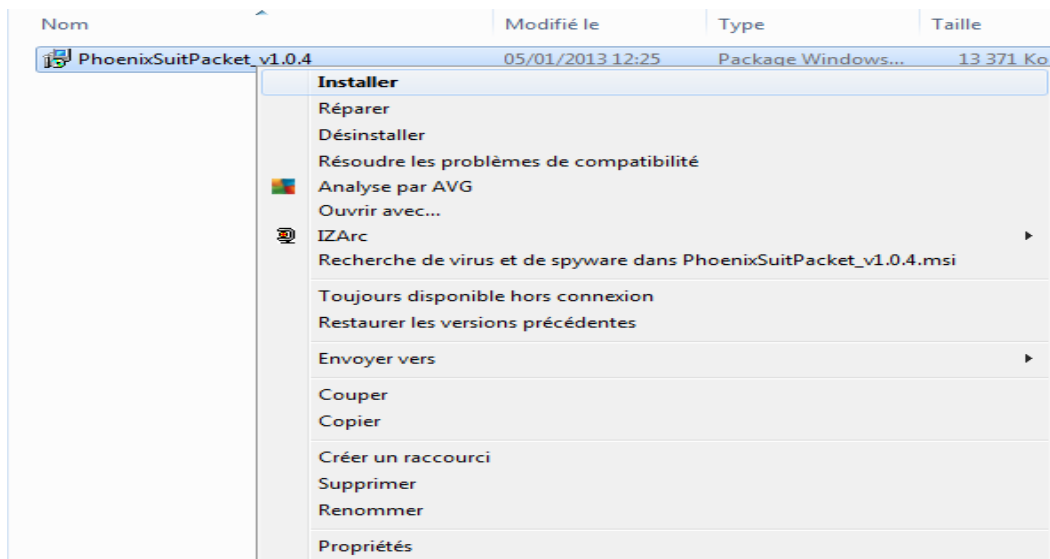
[http://www.mediafire.com/download/xv2ha4w7srx49h/PhoenixSuitPacket\\_v1.0.6.zip](http://www.mediafire.com/download/xv2ha4w7srx49h/PhoenixSuitPacket_v1.0.6.zip)

Une fenêtre s'ouvre sélectionner « **Enregistrer le fichier** » de préférence enregistrer le fichier sur votre bureau

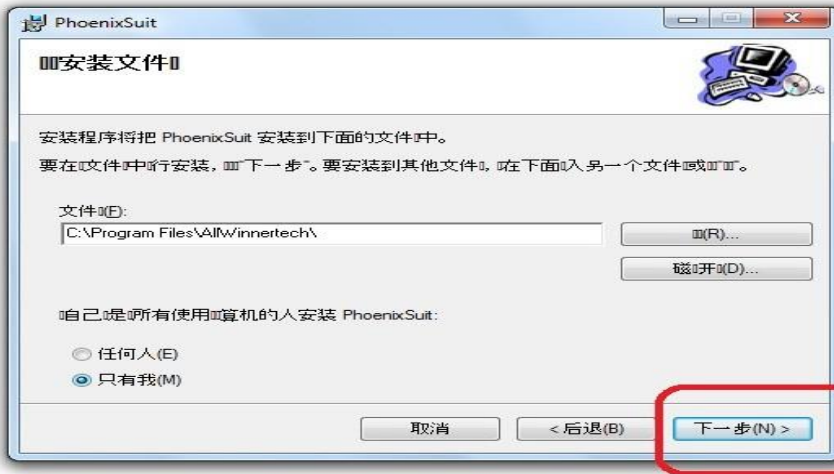


Pour plus de faciliter, copiez le dossier sur le bureau de votre pc puis décompresser

1. Cliquez sur L'application « **PhenixSuitPacket\_V1.06** » puis installer.



Nom	Modifié le	Type	Taille
PhoenixSuitPacket_v1.0.4	05/01/2013 12:25	Package Windows...	13 371 Ko



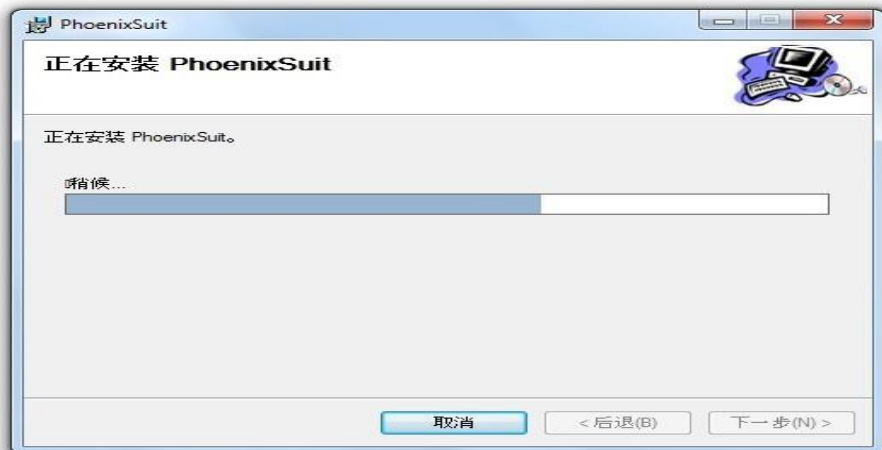
Cliquez sur exécuter « **flèche rouge** »

Nom	Modifié le	Type	Taille
PhoenixSuitPacket_v1.0.4	05/01/2013 12:25	Package Windows...	13 371 Ko



La barre de défilement se lance

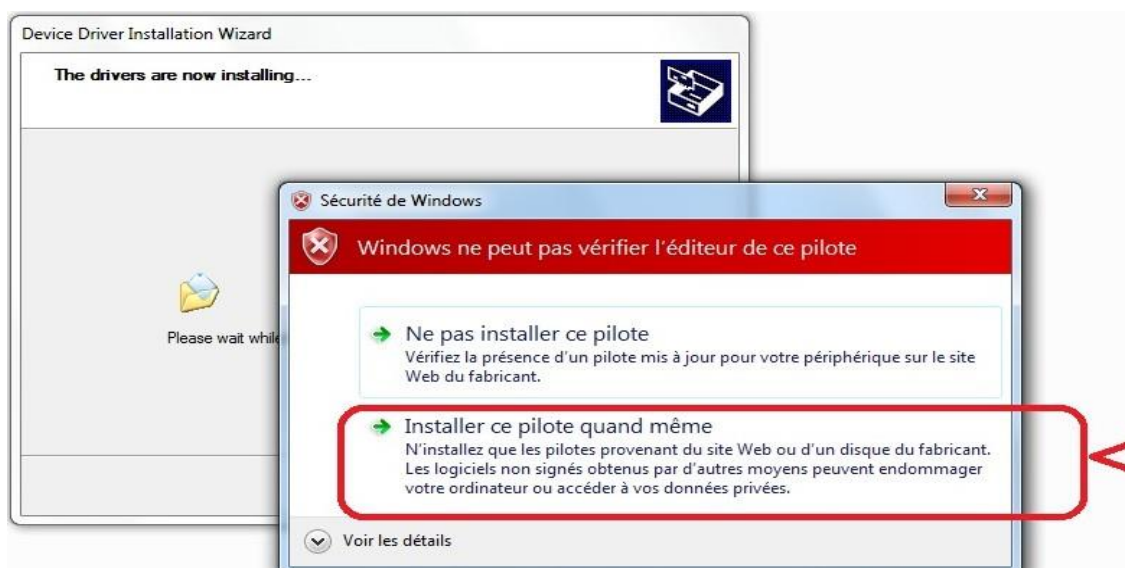
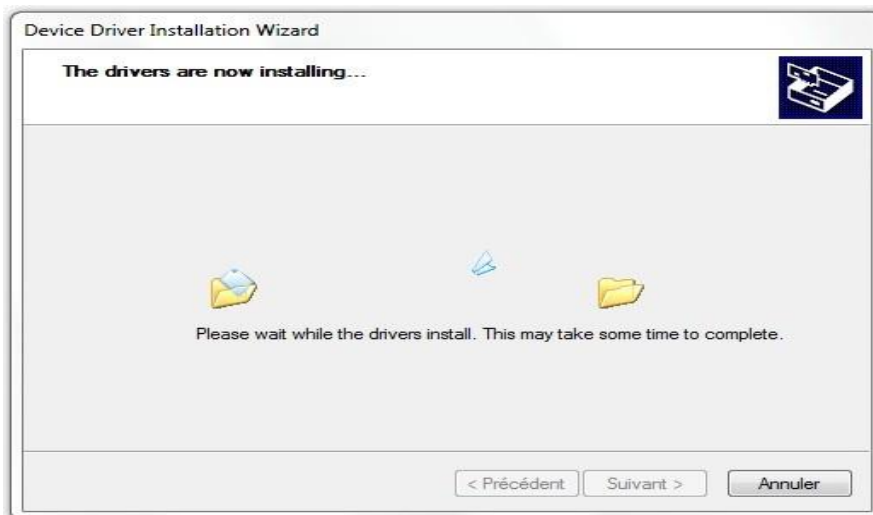
Nom	Modifié le	Type	Taille
PhoenixSuitPacket_v1.0.4	05/01/2013 12:25	Package Windows...	13 371 Ko



L'installation de PhoenixSuitPacket commence



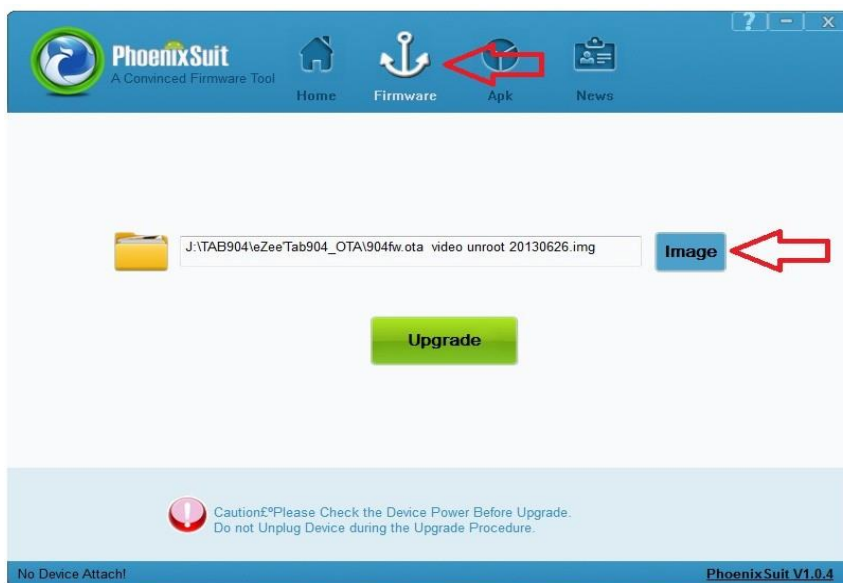
Cliquez sur suivant



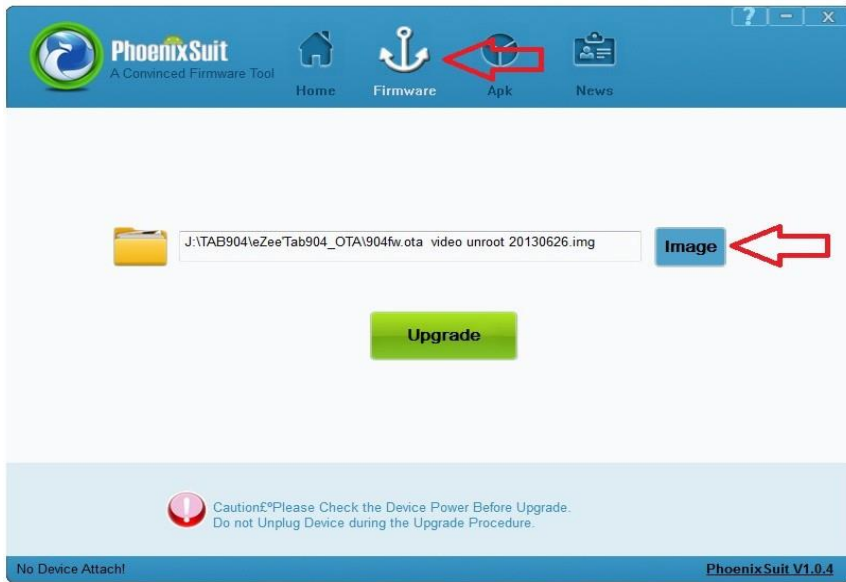


Cliquez sur Terminer

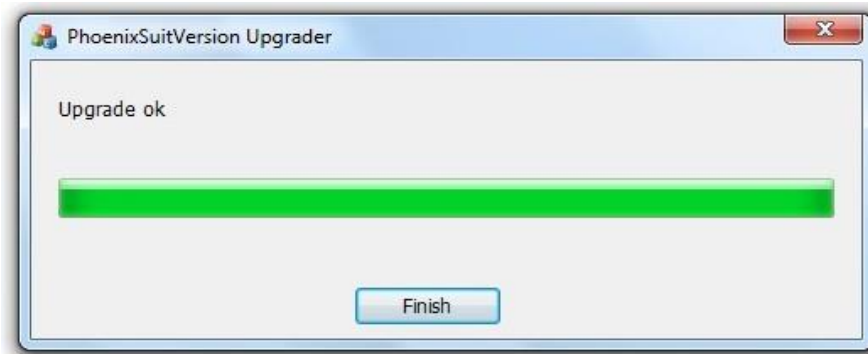
Une fois l'application **PhoenixSuit** est installer allez dans Démarrer tous les programme puis lancer Phoenixsuit



Sélectionnez l'image «10010-S\_A83T\_N102\_N1021L1BC\_20150205.img » qui se trouve dans le dossier.



Une fois vous cliquez sur Upgrade une barre de défilement se lance



Mise à jour terminé,

# UPDATING EZEE'TAB 10010-S

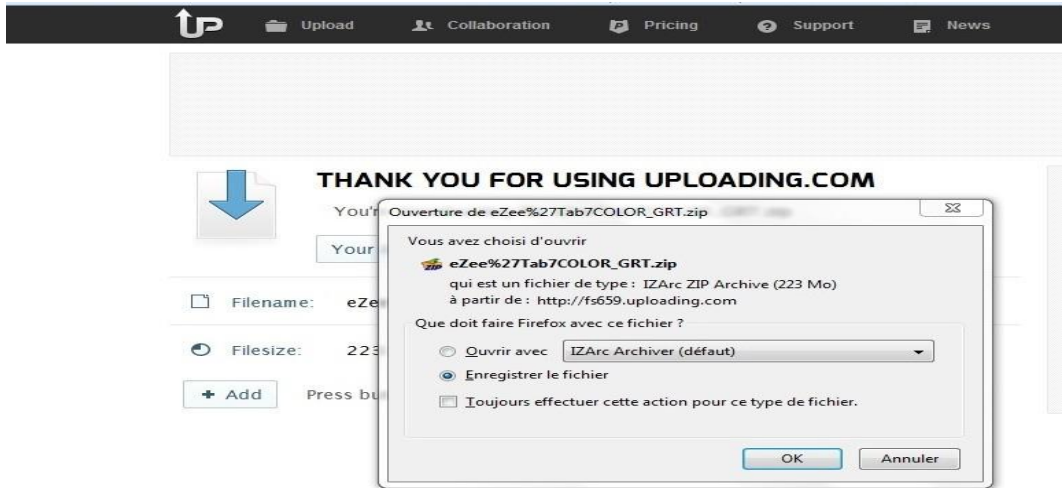
Please download the update file on the link below:

[www.storex.eu/supportb/download/fw/10010-S\\_A83T\\_N102\\_N1021L1BC\\_20150205.rar](http://www.storex.eu/supportb/download/fw/10010-S_A83T_N102_N1021L1BC_20150205.rar)

Download the upgrade software:

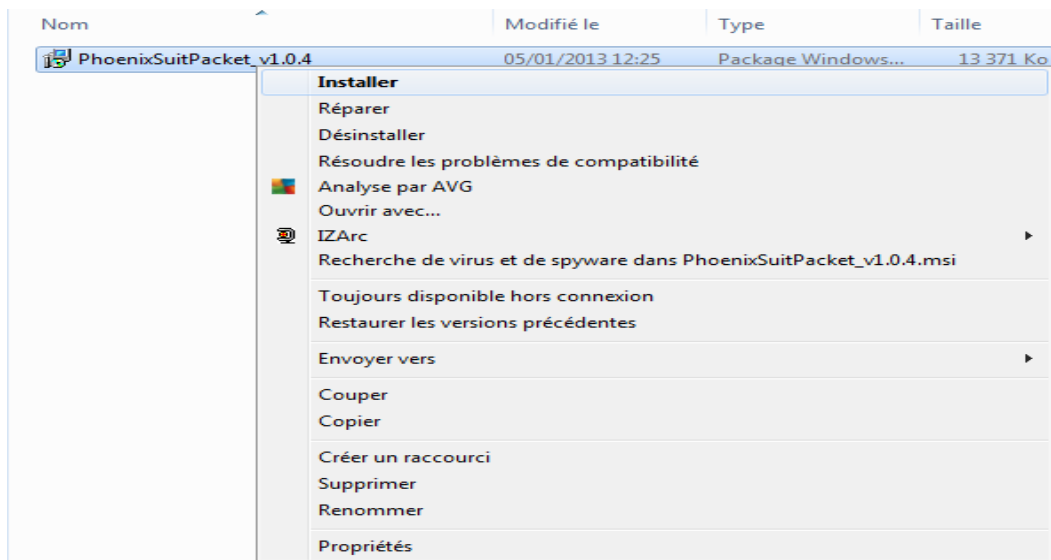
[http://www.mediafire.com/download/xv2ha4w7srxf49h/PhoenixSuitPacket\\_v1.0.6.zip](http://www.mediafire.com/download/xv2ha4w7srxf49h/PhoenixSuitPacket_v1.0.6.zip)

A window opens select '**Save file**' preferably save the file on your desktop.

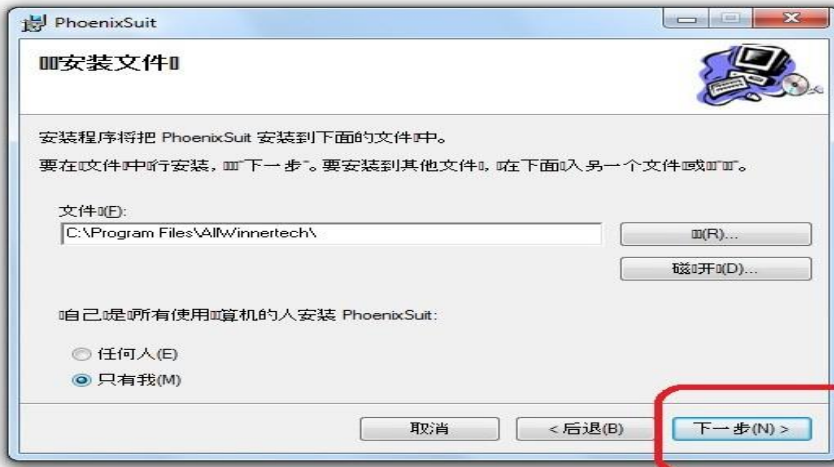


For more help, copy the folder on the desktop of your pc and then unzip.

1. Click on the “**PhenixSuitPacket\_V1.06**” application and then install.



Nom	Modifié le	Type	Taille
PhoenixSuitPacket_v1.0.4	05/01/2013 12:25	Package Windows...	13 371 Ko



Click on « red arrow ».

Nom	Modifié le	Type	Taille
PhoenixSuitPacket_v1.0.4	05/01/2013 12:25	Package Windows...	13 371 Ko



The installing process will be shown.

Nom	Modifié le	Type	Taille
PhoenixSuitPacket_v1.0.4	05/01/2013 12:25	Package Windows...	13 371 Ko

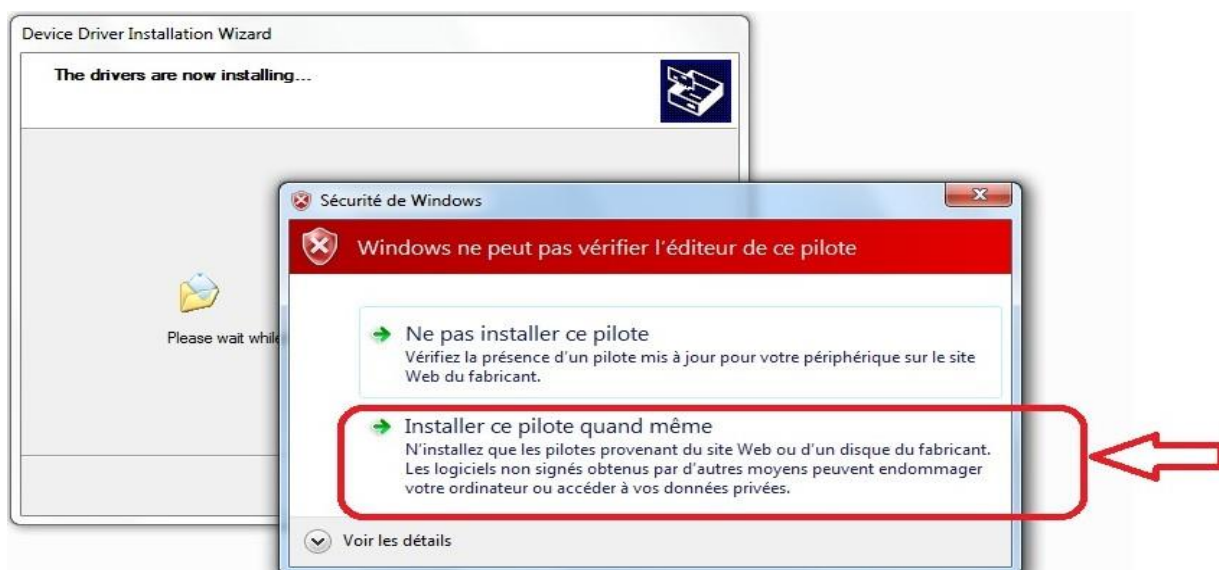
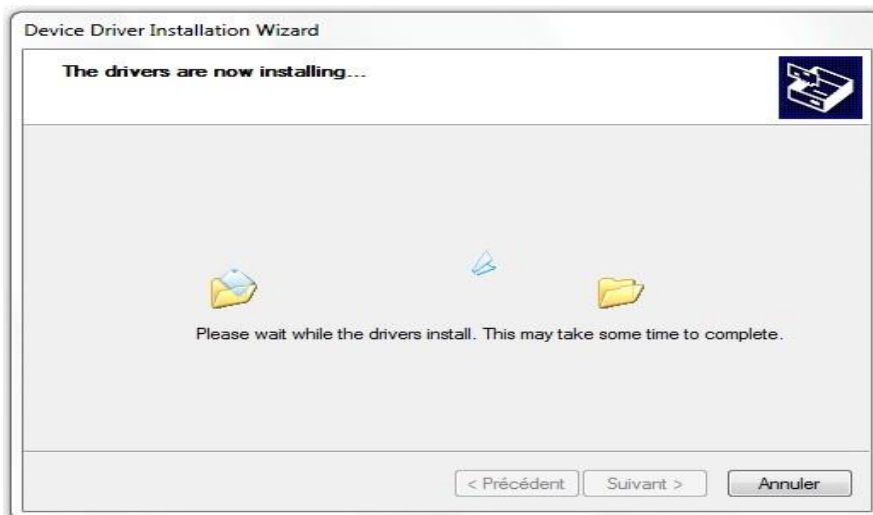




Then the PhoenixSuit Packet installation will begin.



Click "Next" and choose "Install drivers anyway".

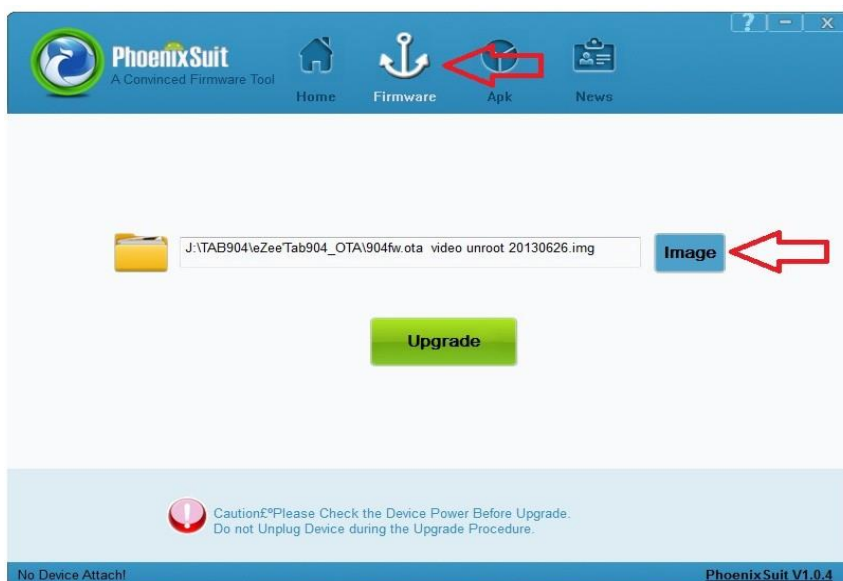




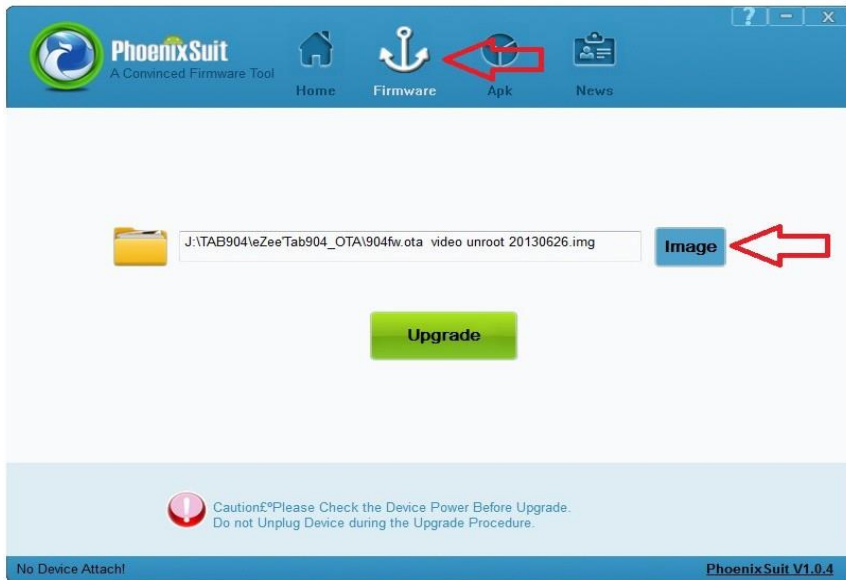


Click on **“Finish”**.

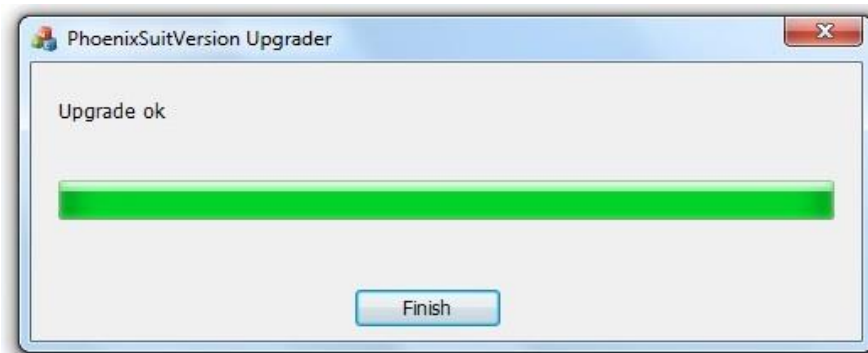
Once the PhoenixSuit application is installed go to **“start”**, **“all programs”** then run Phoenixsuit.



Select the image « 10010-S\_A83T\_N102\_N1021L1BC\_20150205.img ».



Click on **“Upgrade”** in order to launch the update process.



Once the update process is finished, click on **“Finish”**.

# ACTUALIZACION EZEE'TAB 10010-S

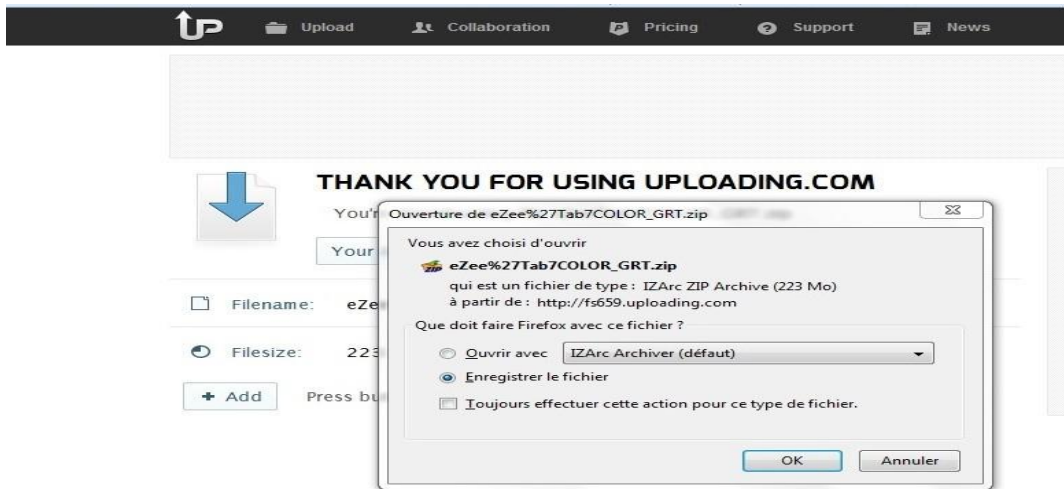
Descargue el archivo de actualización en el siguiente enlace:

[www.storex.eu/supportb/download/fw/10010-S\\_A83T\\_N102\\_N1021L1BC\\_20150205.rar](http://www.storex.eu/supportb/download/fw/10010-S_A83T_N102_N1021L1BC_20150205.rar)

Descargue el software de actualización:

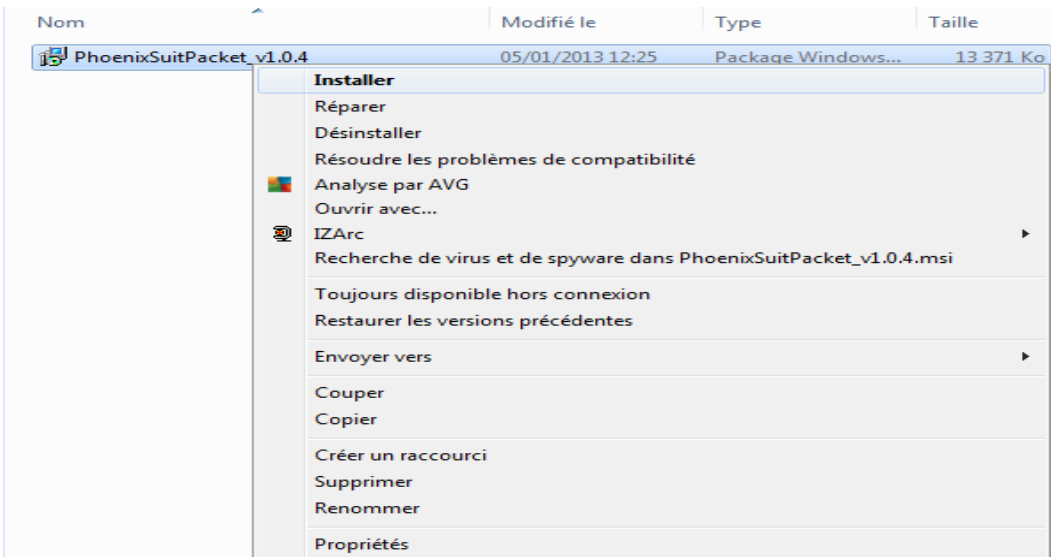
[http://www.mediafire.com/download/xv2ha4w7srxf49h/PhoenixSuitPacket\\_v1.0.6.zip](http://www.mediafire.com/download/xv2ha4w7srxf49h/PhoenixSuitPacket_v1.0.6.zip)

Abre una ventana seleccione **"Guardar archivo"** preferentemente guarde el archivo en su escritorio

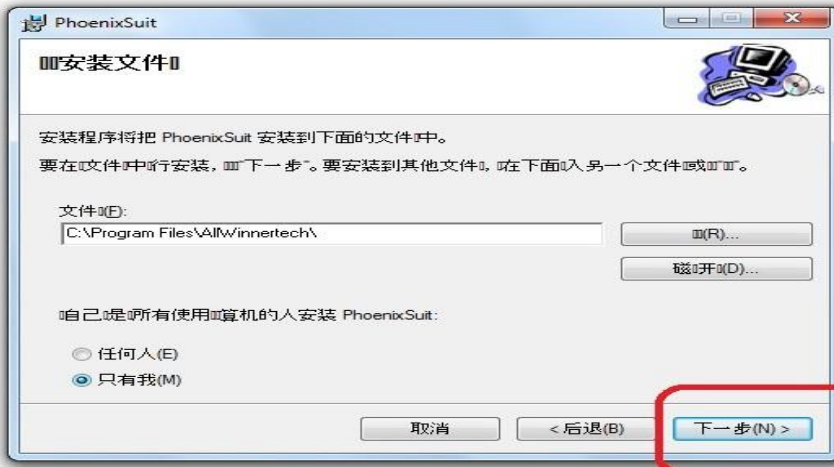


Para obtener más ayuda, copiar la carpeta en el escritorio de su pc y luego descomprimir.

1. Clic en la aplicación "**PhenixSuitPacket\_V1.06**" y luego instalar.

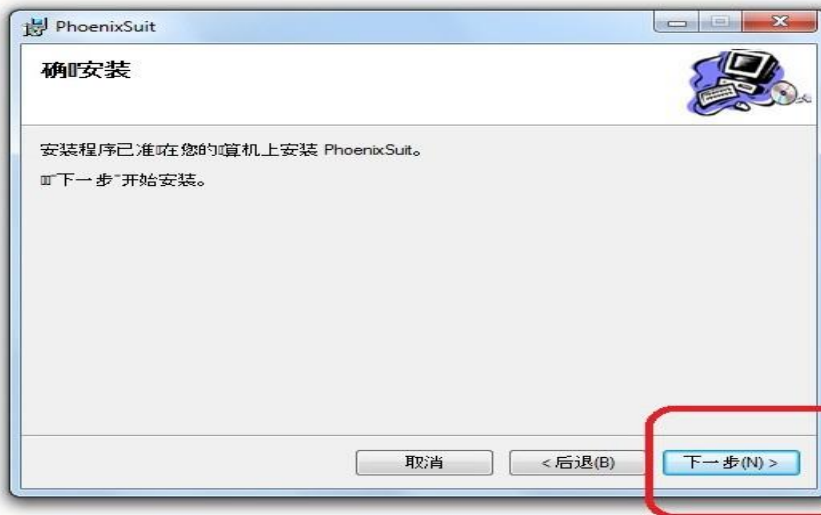


Nom	Modifié le	Type	Taille
PhoenixSuitPacket_v1.0.4	05/01/2013 12:25	Package Windows...	13 371 Ko



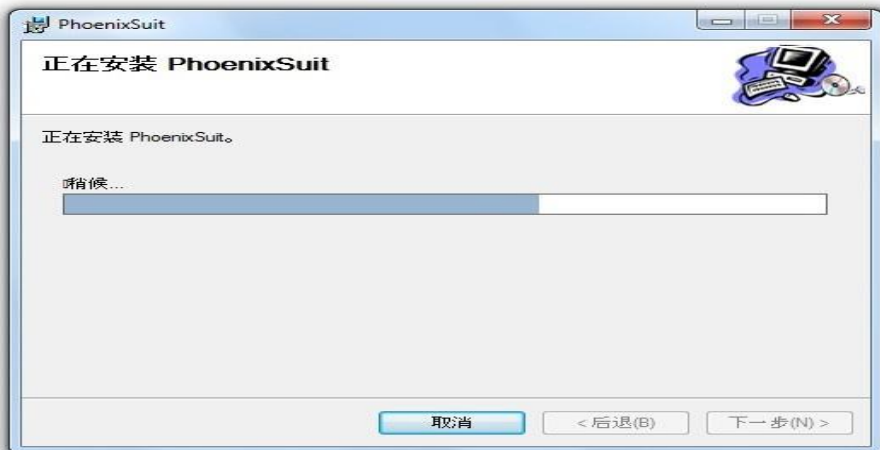
Haga clic en "flecha roja".

Nom	Modifié le	Type	Taille
PhoenixSuitPacket_v1.0.4	05/01/2013 12:25	Package Windows...	13 371 Ko



Se mostrará el proceso de instalación.

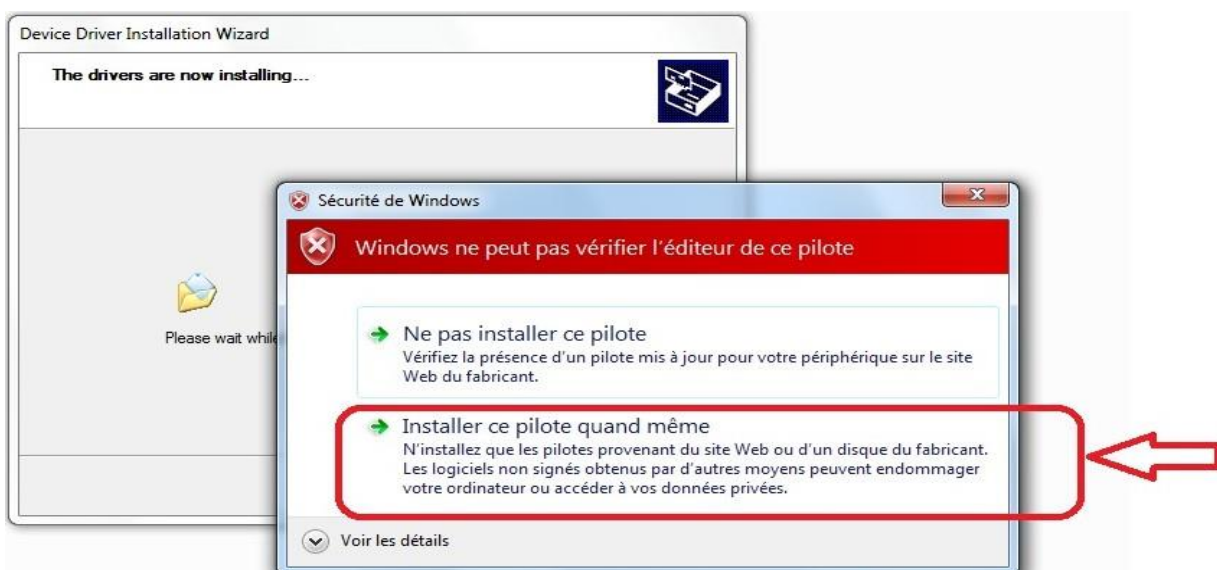
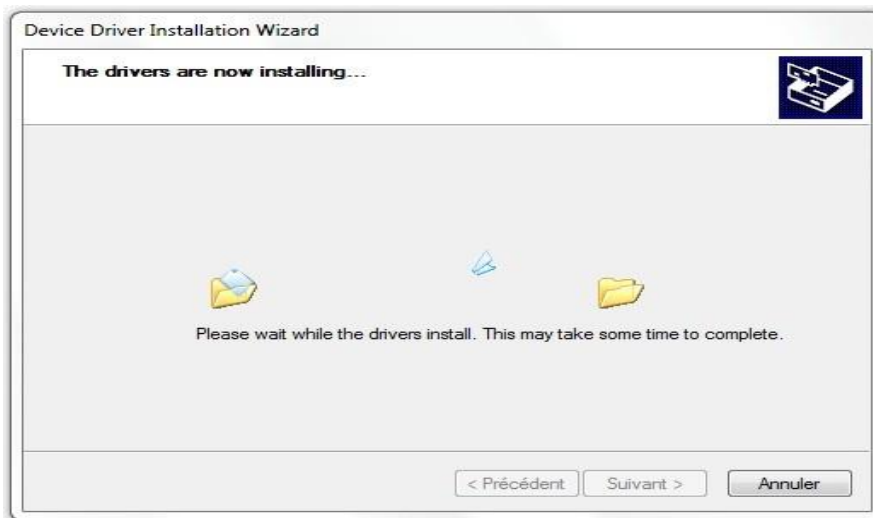
Nom	Modifié le	Type	Taille
PhoenixSuitPacket_v1.0.4	05/01/2013 12:25	Package Windows...	13 371 Ko



Entonces comenzará la instalación del paquete PhoenixSuit.



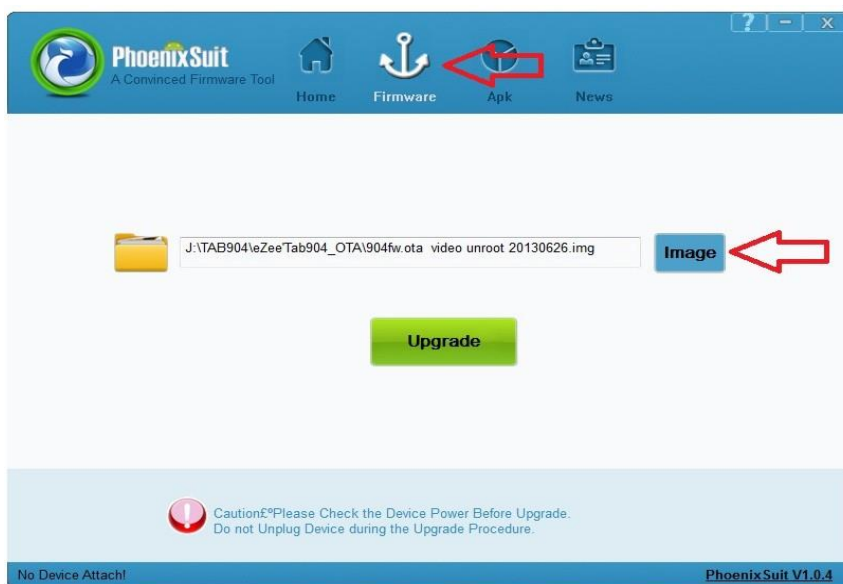
Haga clic en "Siguiete" y elija "Instalar controladores de todos modos".



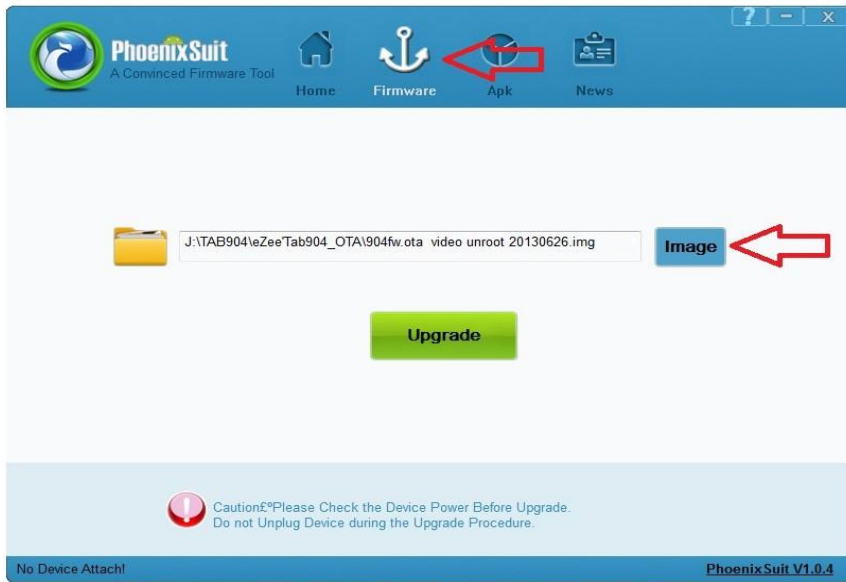


Haga clic en "Finish".

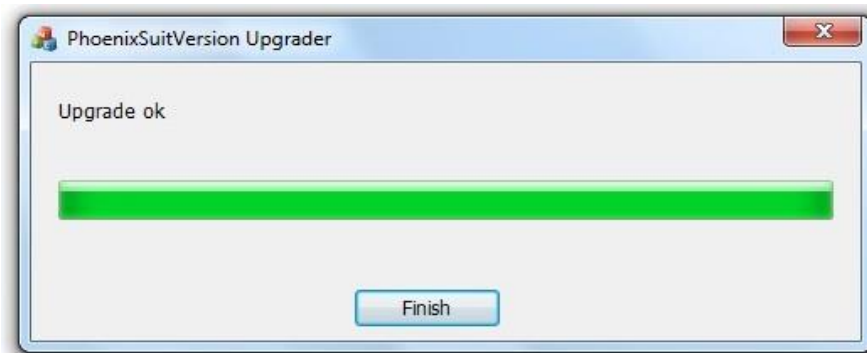
Una vez instalada la aplicación PhoenixSuit vaya a "Inicio", "todos los programas" luego ejecutar Phoenixsuit.



Seleccione la imagen "10010-S\_A83T\_N102\_N1021L1BC\_20150205.img".



Haga clic en "**Actualizar**" para iniciar el proceso de actualización.



Una vez finalizado el proceso de actualización, haga clic en "**Finish**".



# ATUALIZAÇÃO EZEE'TAB 10010-S

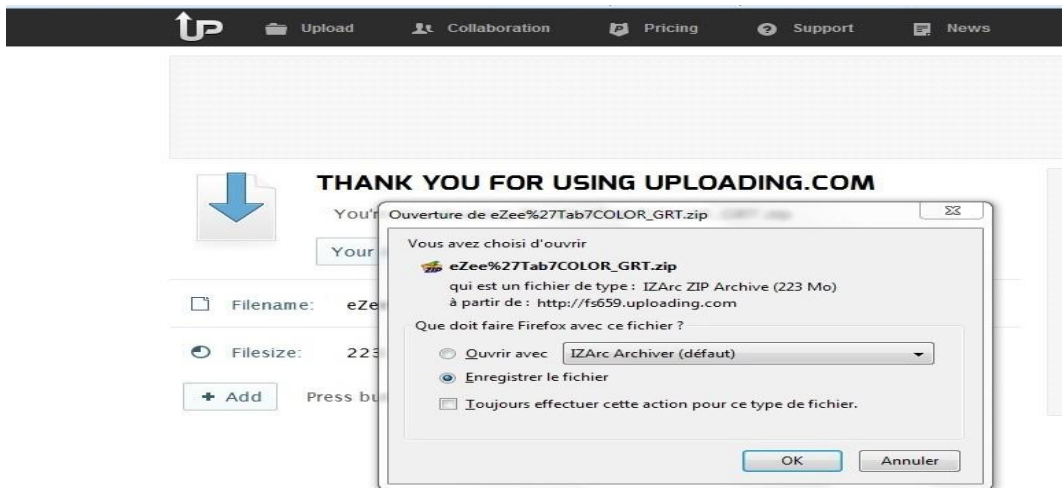
Baixe arquivo de atualização no link abaixo:

[www.storex.eu/supportb/download/fw/10010-S\\_A83T\\_N102\\_N1021L1BC\\_20150205.rar](http://www.storex.eu/supportb/download/fw/10010-S_A83T_N102_N1021L1BC_20150205.rar)

Baixe o software de atualização:

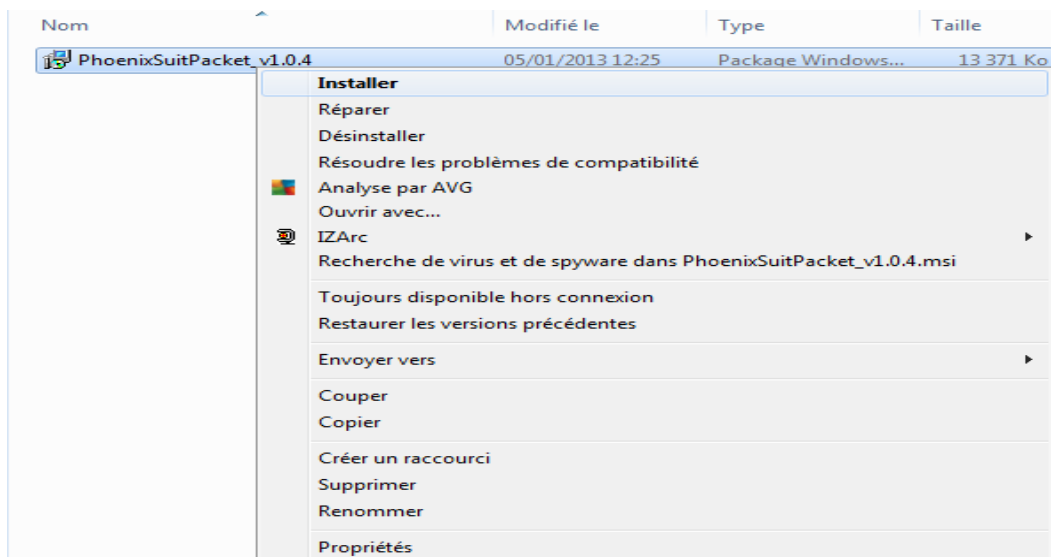
[http://www.mediafire.com/download/xv2ha4w7srx49h/PhoenixSuitPacket\\_v1.0.6.zip](http://www.mediafire.com/download/xv2ha4w7srx49h/PhoenixSuitPacket_v1.0.6.zip)

Abre uma janela, selecione '**salvar arquivo**' de preferência salve o arquivo no seu desktop.

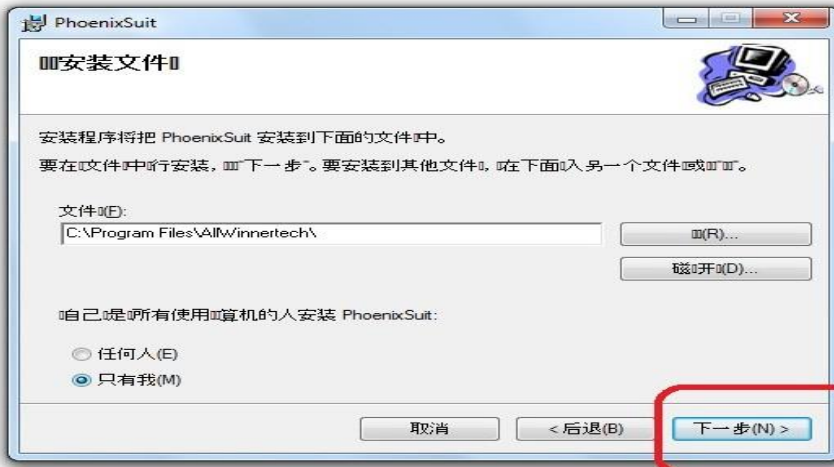


Para obter mais ajuda, copie a pasta no desktop do seu pc e em seguida descompacte.

1. Clique sobre o aplicativo "**PhenixSuitPacket\_V1.06**" e em seguida instalar.



Nom	Modifié le	Type	Taille
PhoenixSuitPacket_v1.0.4	05/01/2013 12:25	Package Windows...	13 371 Ko



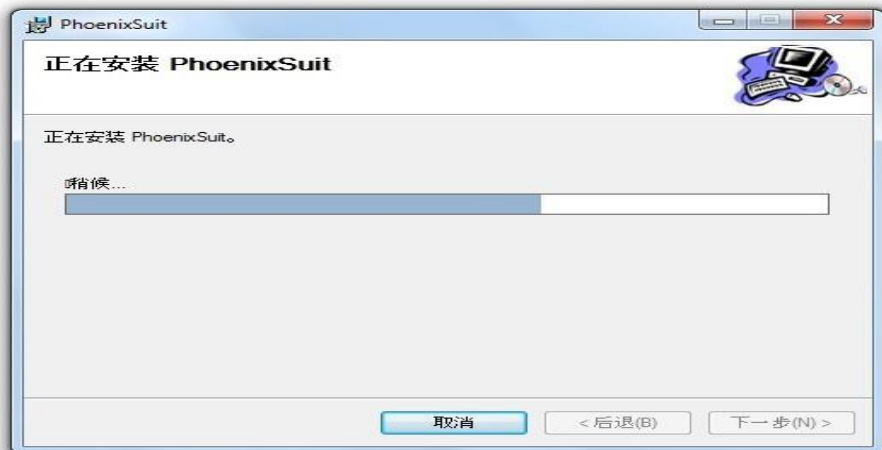
Clique na “seta vermelha”.

Nom	Modifié le	Type	Taille
PhoenixSuitPacket_v1.0.4	05/01/2013 12:25	Package Windows...	13 371 Ko



O processo de irá iniciar-se.

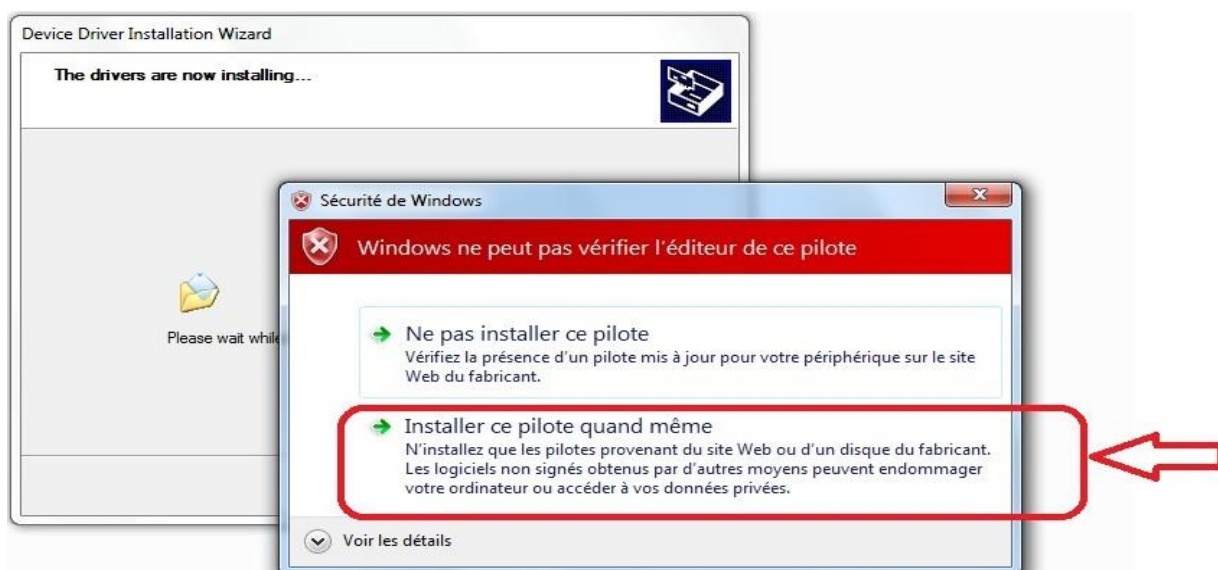
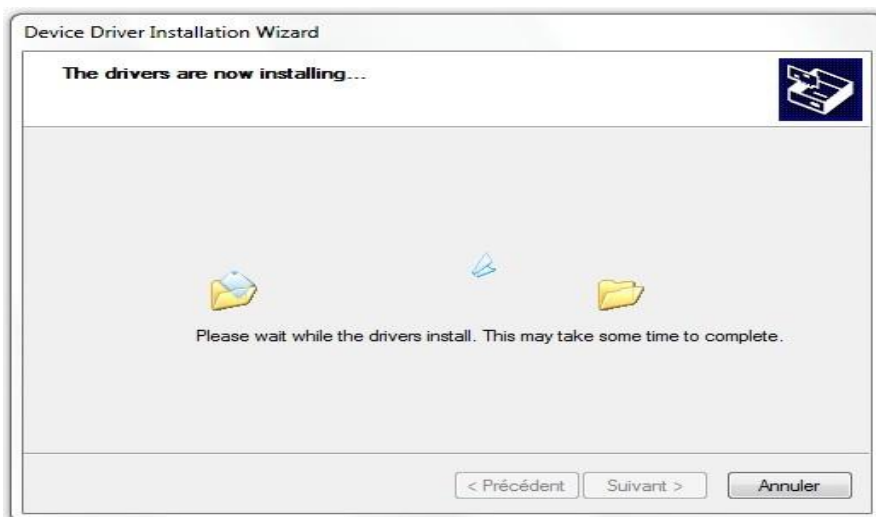
Nom	Modifié le	Type	Taille
PhoenixSuitPacket_v1.0.4	05/01/2013 12:25	Package Windows...	13 371 Ko



Em seguida começará a instalação do pacote PhoenixSuit.



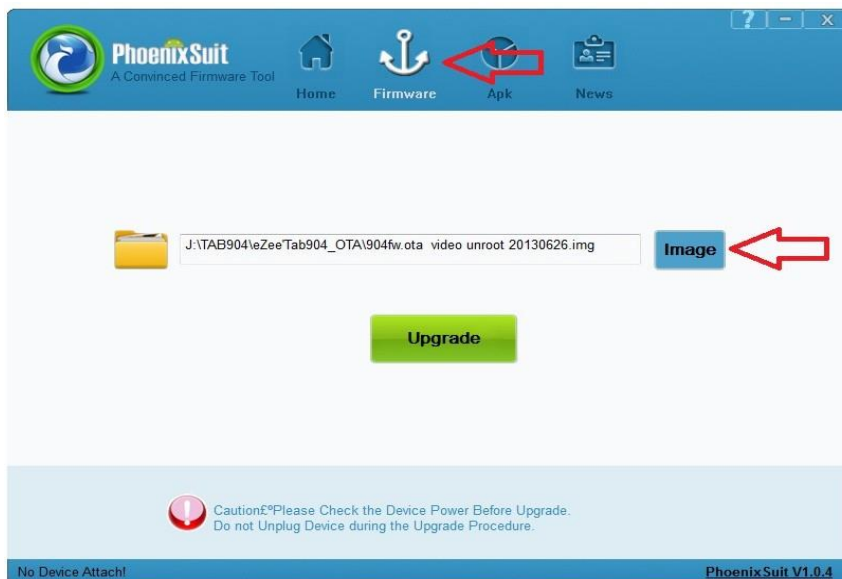
Clique em "Seguinte" e escolha "Instalar os drivers de qualquer maneira".



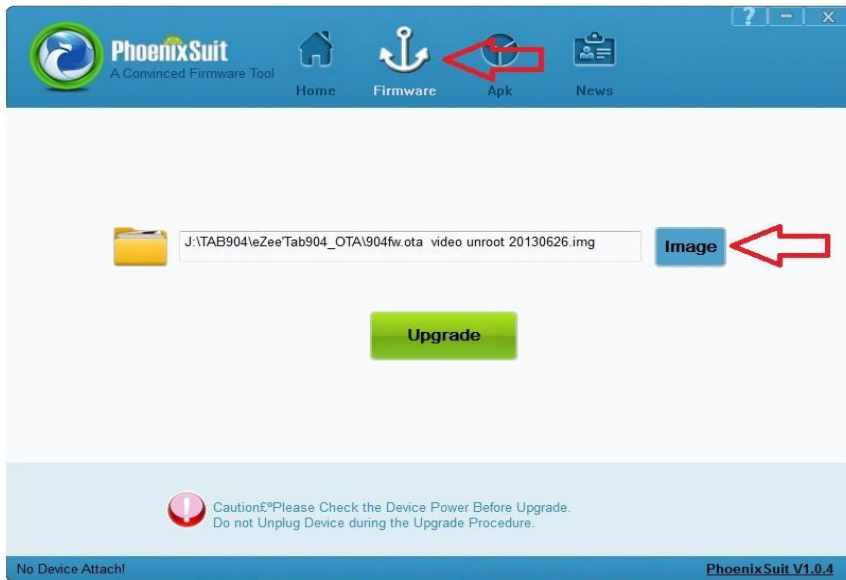


Carregue sob “Terminar”.

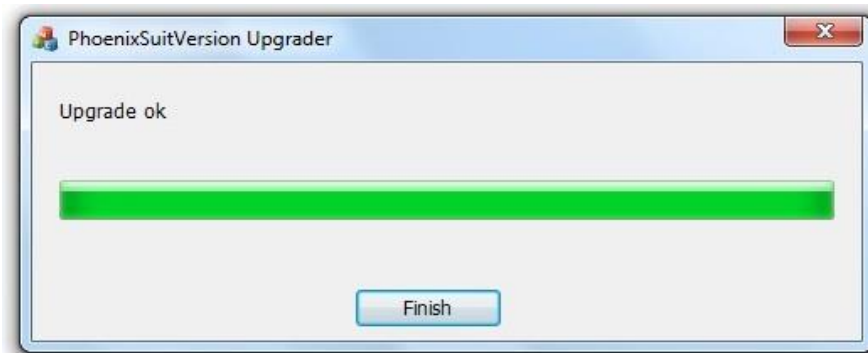
Uma vez instalado o aplicativo PhoenixSuit, selecione "Iniciar", "todos os programas", em seguida, execute Phoenixsuit.



Selecione a imagem de “10010-S\_A83T\_N102\_N1021L1BC\_20150205.img”.



Carregue sob “**Upgrade**” para iniciar o processo de atualização.



Uma vez o processo terminado carregue sob “**Terminar**”.