

MISE A JOUR EZEE'TAB 8D11-S

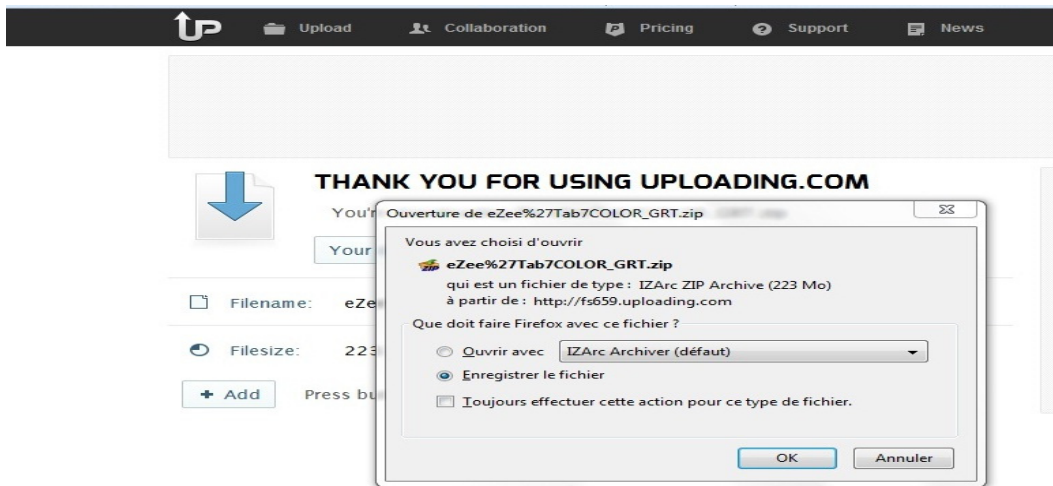
Veuillez télécharger le dossier de mise à jour selon le lien suivant :

www.storex.eu/download/fw/A23_D801HC_D801HC_1403022_20140403_8D11-S.rar

Puis le logiciel de mise à jour:

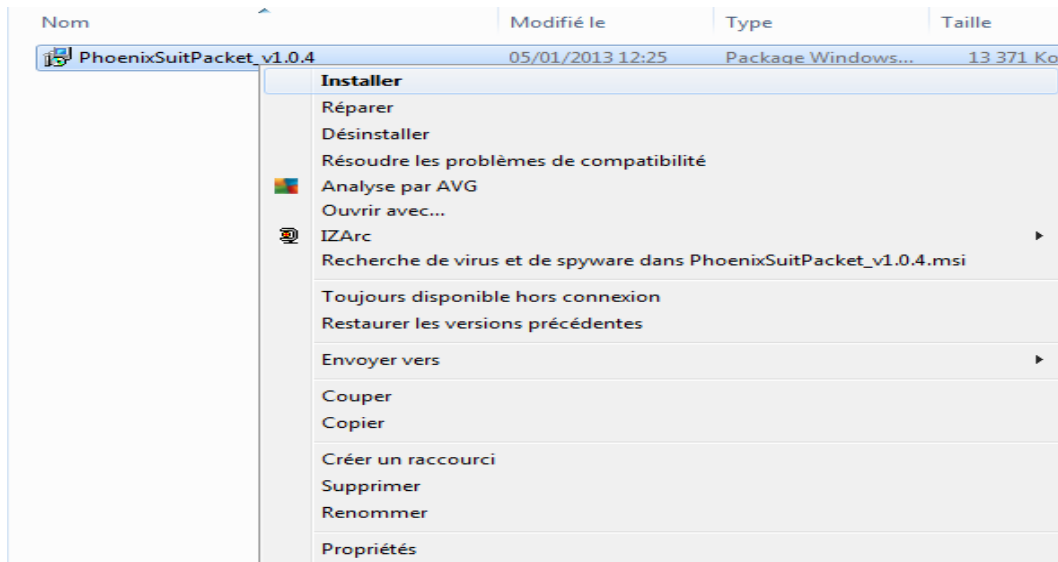
http://www.mediafire.com/download/xv2ha4w7srx49h/PhoenixSuitPacket_v1.0.6.zip

Une fenêtre s'ouvre sélectionner « **Enregistrer le fichier** » de préférence enregistrer le fichier sur votre bureau

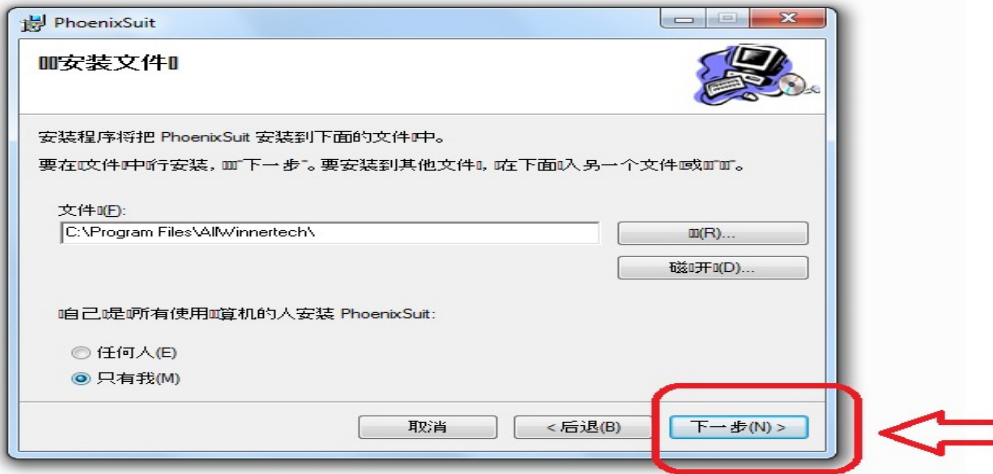


Pour plus de faciliter, copiez le dossier sur le bureau de votre pc puis décompresser

1. Cliquez sur L'application « **PhenixSuitPacket_V1.06** » puis installer.

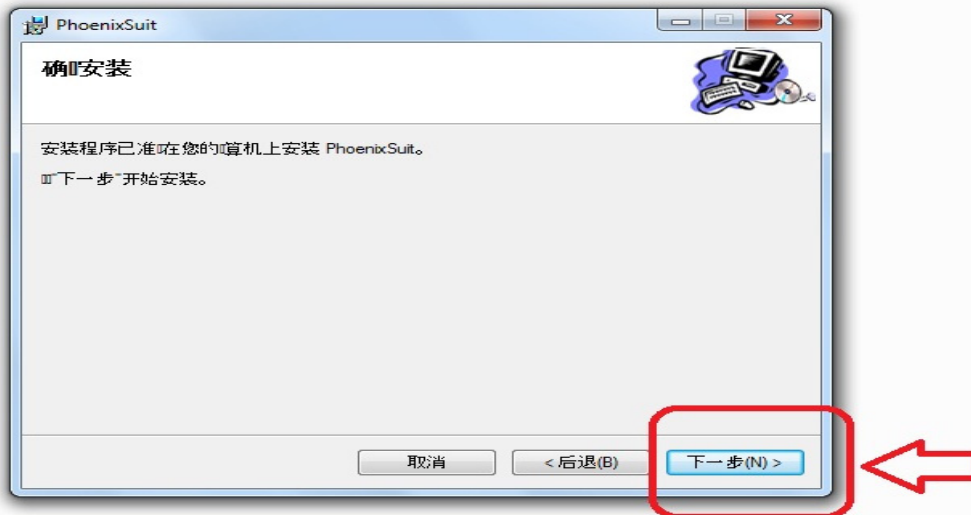


Nom	Modifié le	Type	Taille
PhoenixSuitPacket_v1.0.4	05/01/2013 12:25	Package Windows...	13 371 Ko



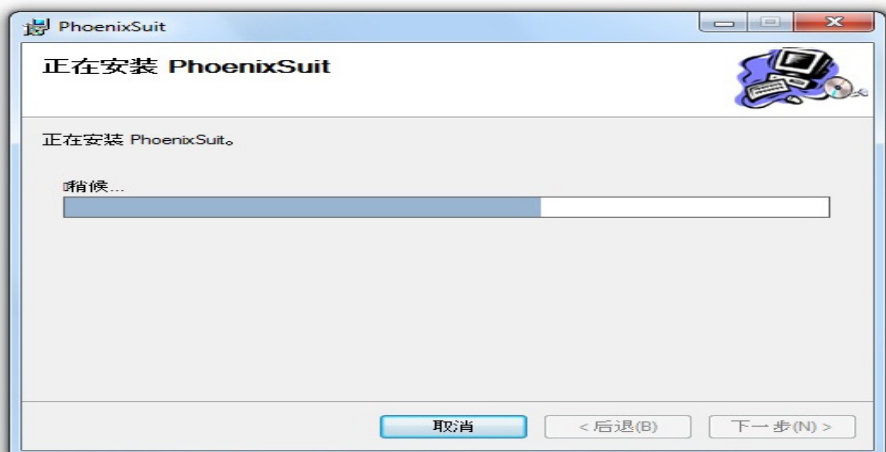
Cliquez sur exécuter « flèche rouge »

Nom	Modifié le	Type	Taille
PhoenixSuitPacket_v1.0.4	05/01/2013 12:25	Package Windows...	13 371 Ko

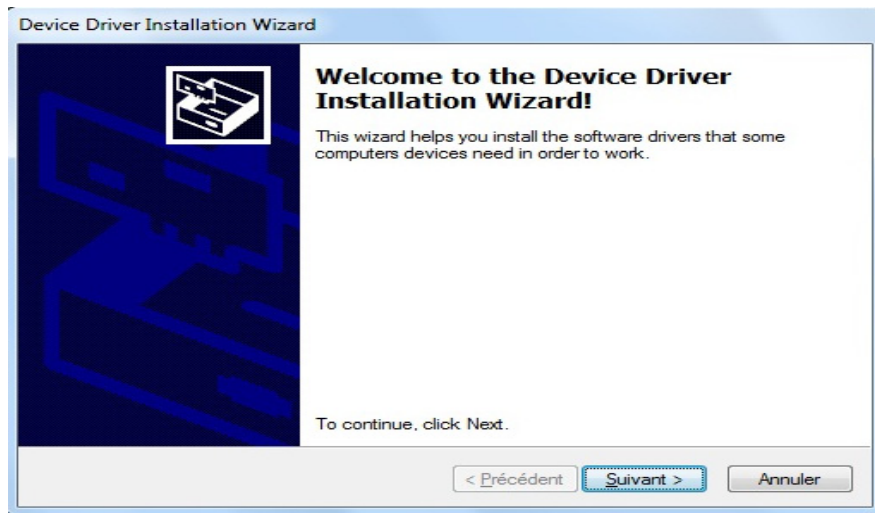


La barre de défilement se lance

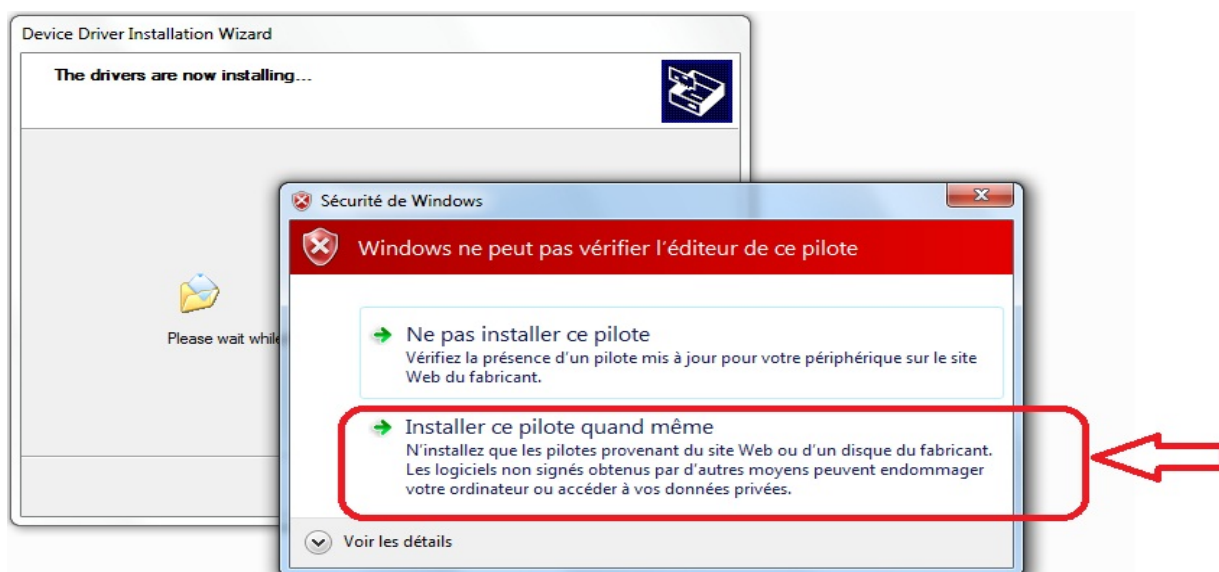
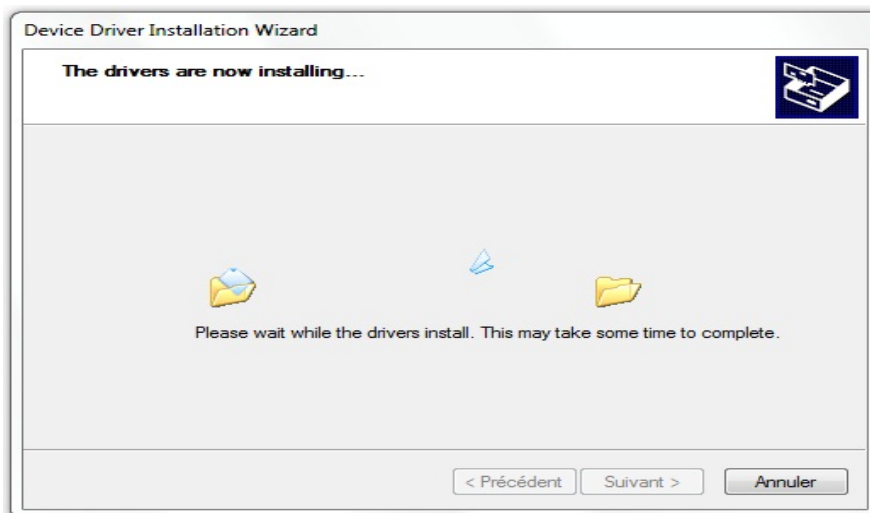
Nom	Modifié le	Type	Taille
PhoenixSuitPacket_v1.0.4	05/01/2013 12:25	Package Windows...	13 371 Ko



L'installation de PhoenixSuitPacket commence



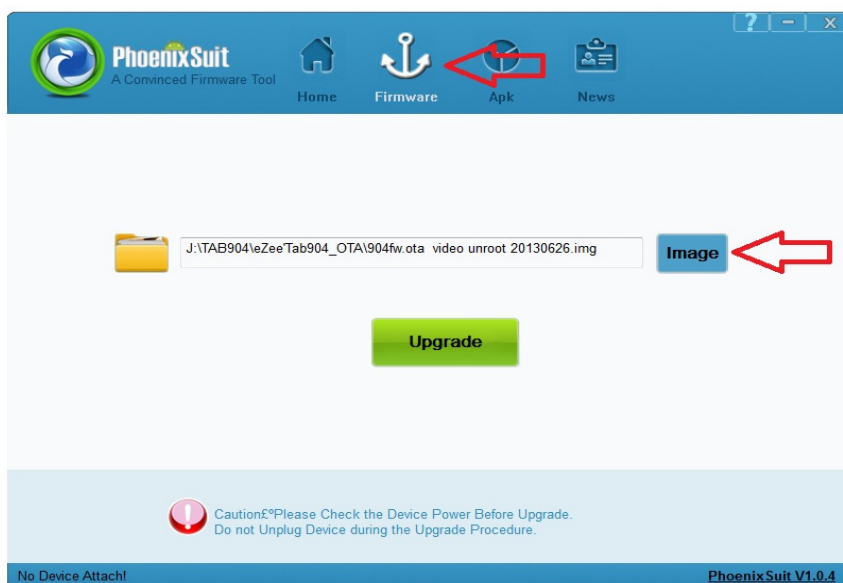
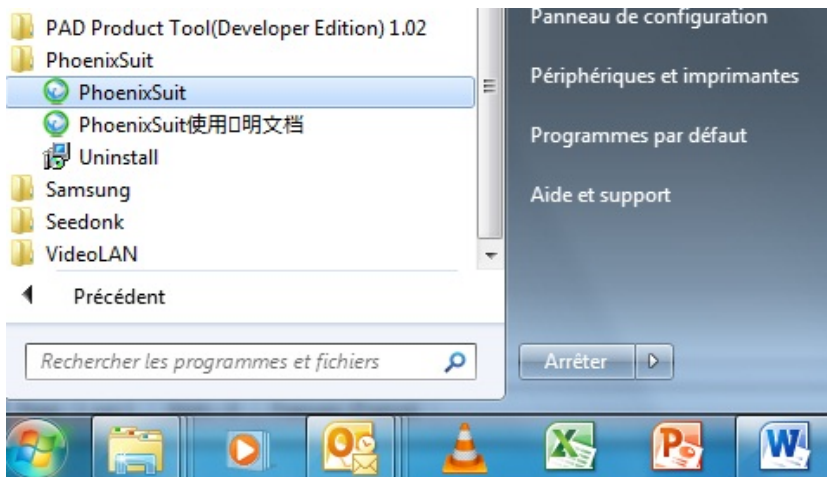
Cliquez sur suivant



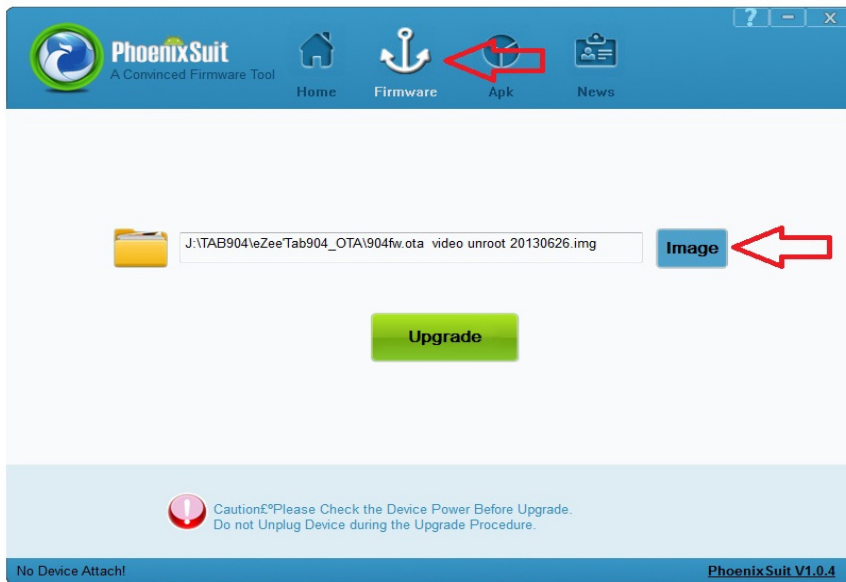


Cliquez sur Terminer

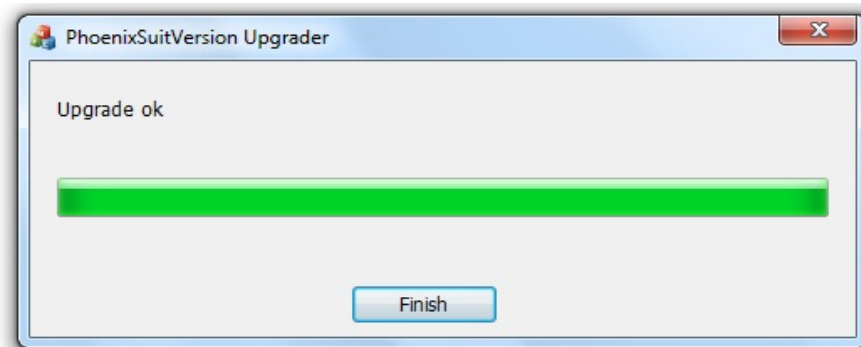
Une fois l'application **PhoenixSuit** est installer allez dans Démarrer tous les programme puis lancer Phoenixsuit



Sélectionnez l'image « **A23_D801HC_D801HC_1403022_20140403_8D11-S.img** » qui se trouve dans le dossier.



Une fois vous cliquez sur Upgrade une barre de défilement se lance



Mise à jour terminé,

UPDATING EZEE'TAB 8D11-S

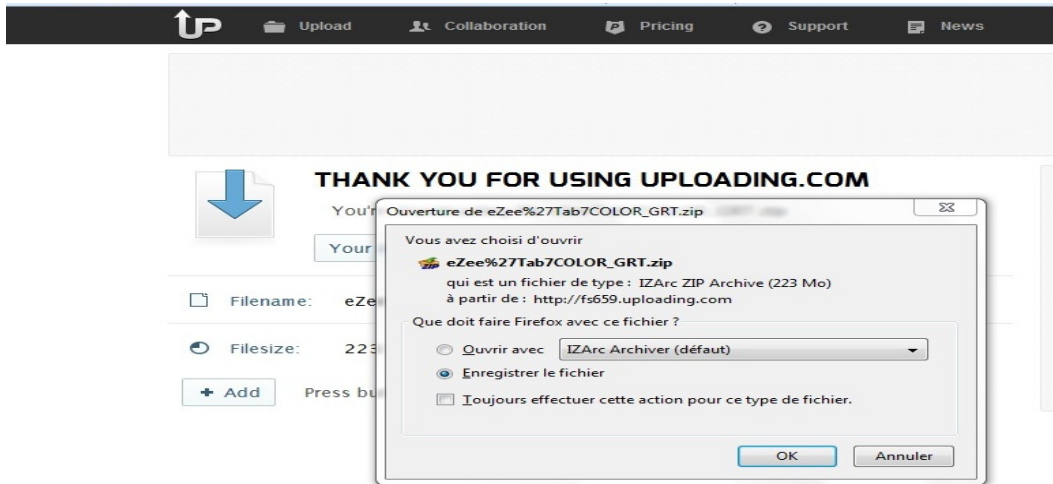
download the update file on the link below:

www.storex.eu/download/fw/A23_D801HC_D801HC_1403022_20140403_8D11-S.rar

Download the upgrade software:

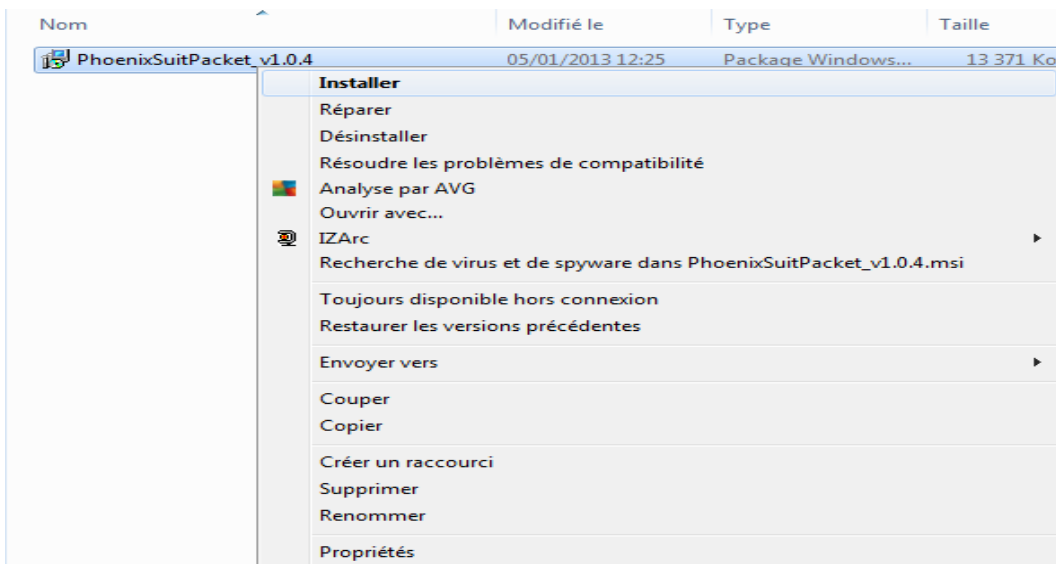
http://www.mediafire.com/download/xv2ha4w7srxf49h/PhoenixSuitPacket_v1.0.6.zip

A window opens select '**Save file**' preferably save the file on your desktop

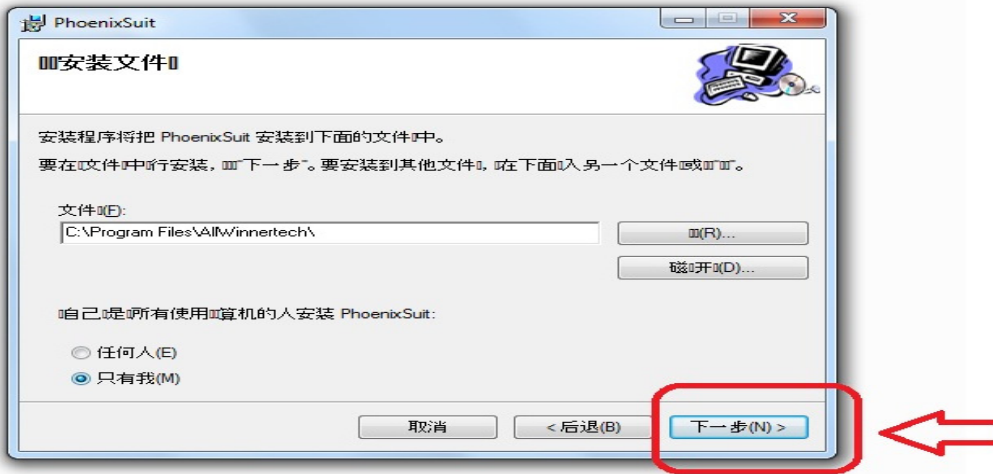


For more help, copy the folder on the desktop of your pc and then unzip.

1. Click on the “**PhenixSuitPacket_V1.06**” application and then install.

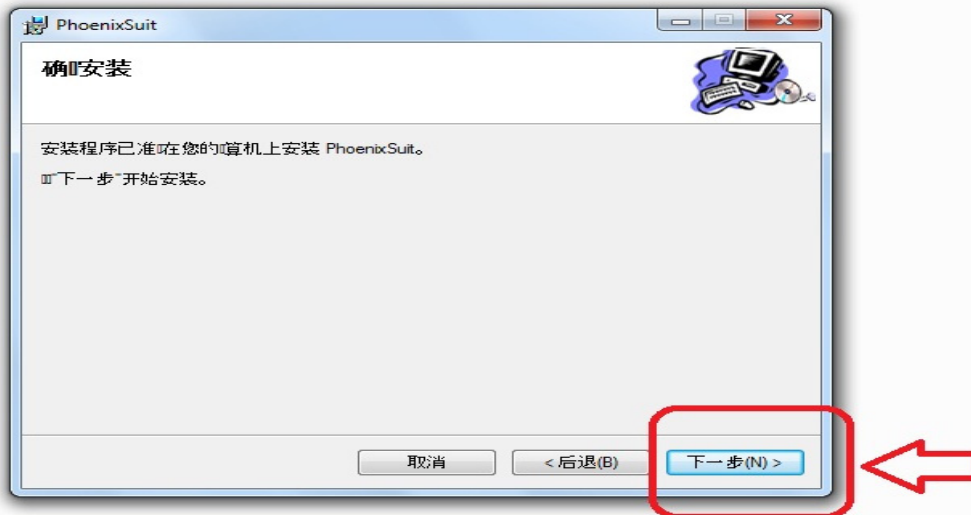


Nom	Modifié le	Type	Taille
PhoenixSuitPacket_v1.0.4	05/01/2013 12:25	Package Windows...	13 371 Ko



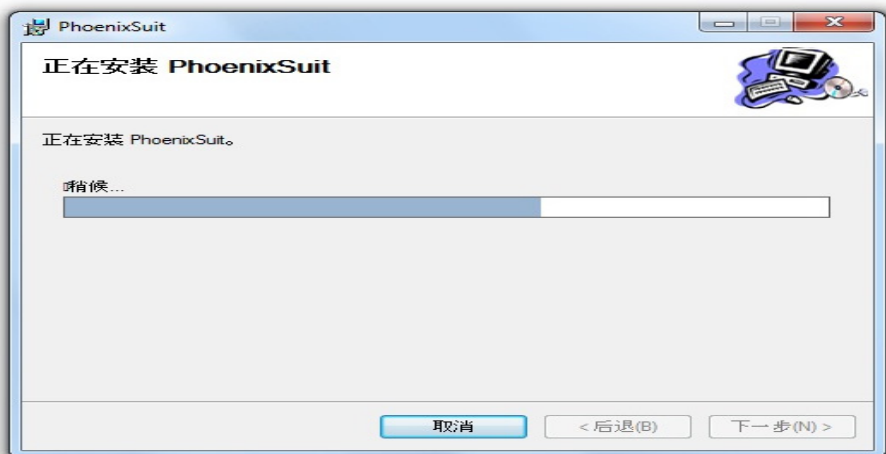
Click on « red arrow ».

Nom	Modifié le	Type	Taille
PhoenixSuitPacket_v1.0.4	05/01/2013 12:25	Package Windows...	13 371 Ko



The installing process will be shown.

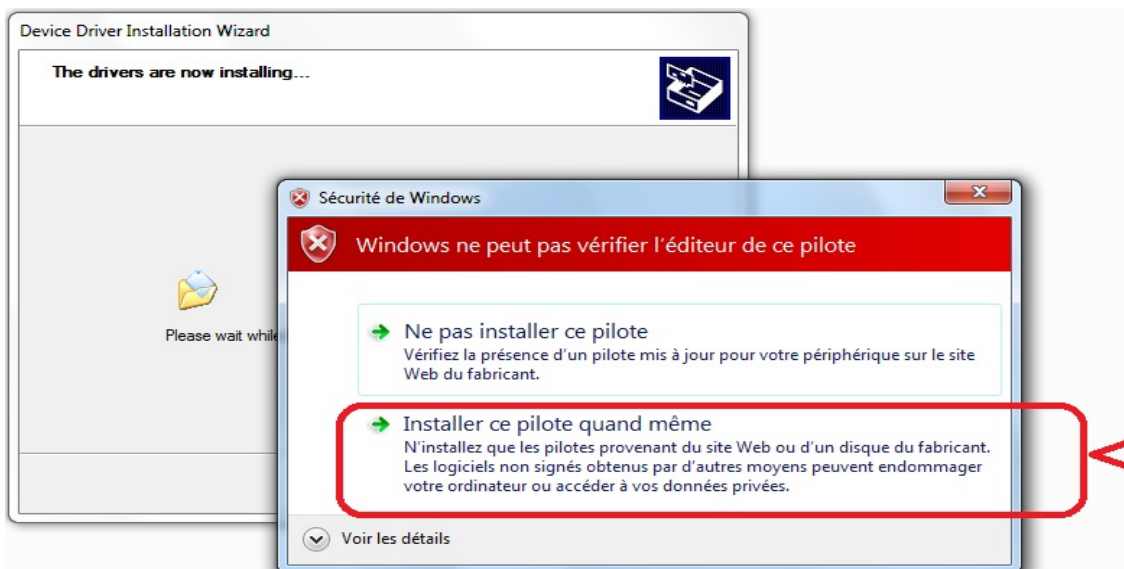
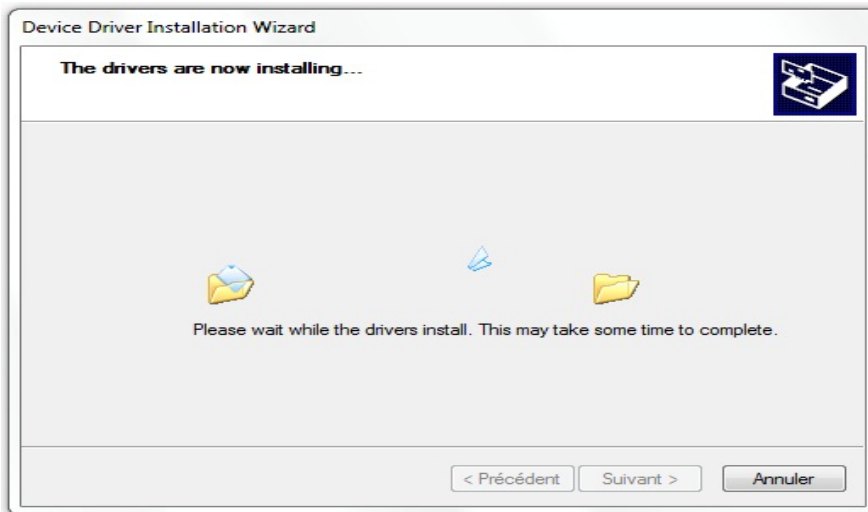
Nom	Modifié le	Type	Taille
PhoenixSuitPacket_v1.0.4	05/01/2013 12:25	Package Windows...	13 371



Then the PhoenixSuit Packet installation will begin.



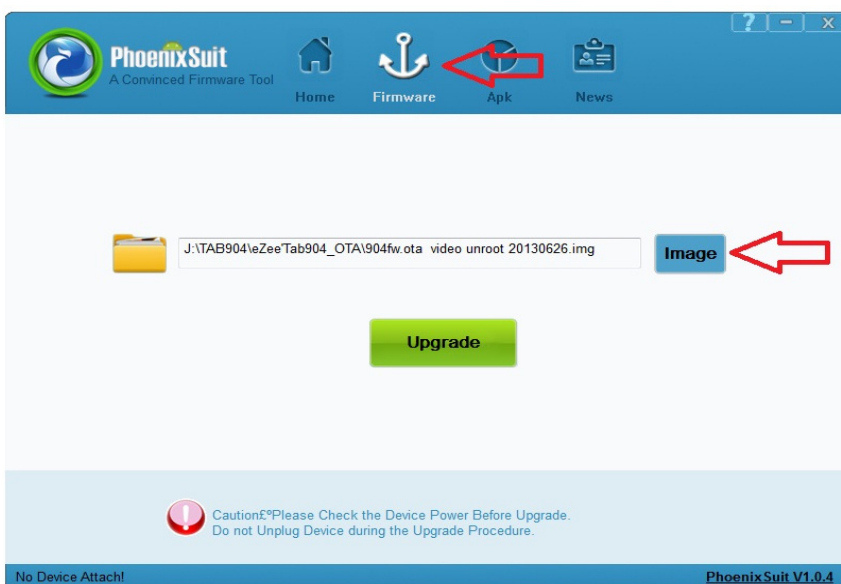
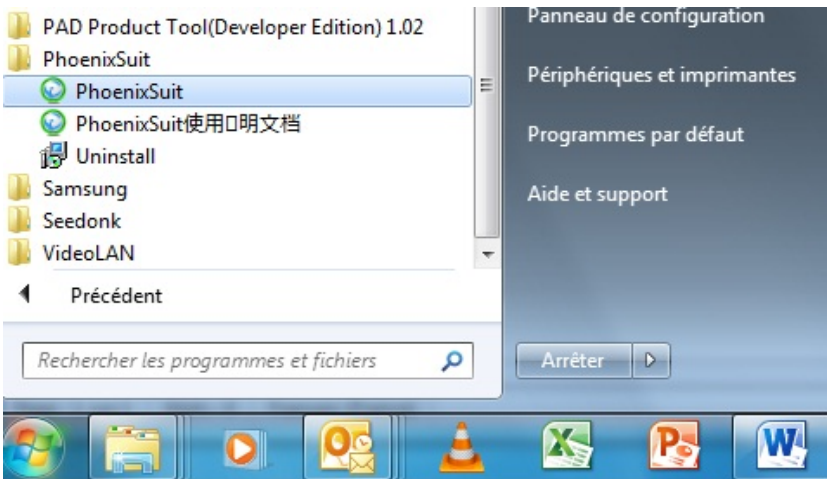
Click "Next" and choose "Install drivers anyway".



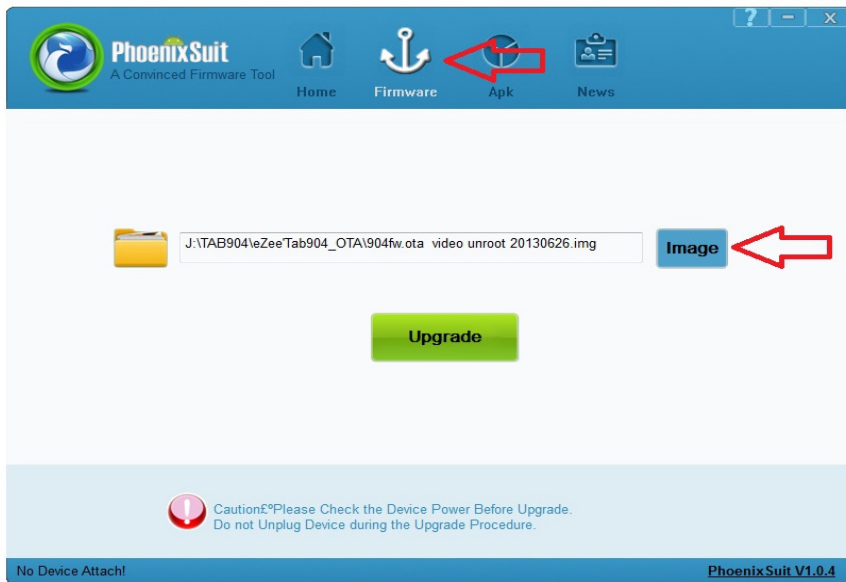


Click on “Finish”.

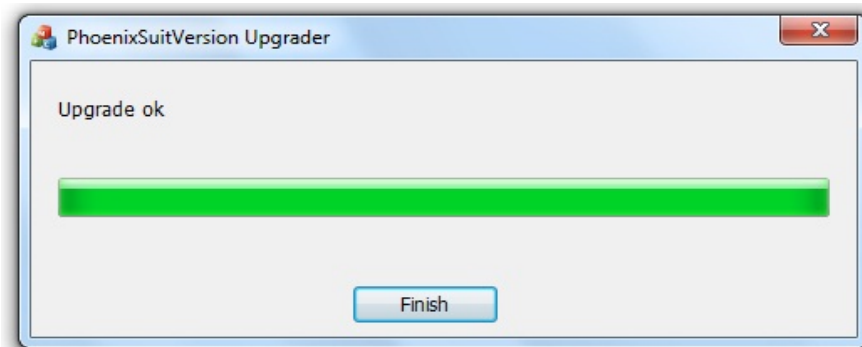
Once the PhoenixSuit application is installed go to “start”, “all programs” then run Phoenixsuit.



Select the image « A23_D801HC_D801HC_1403022_20140403_8D11-S.img».



Click on **“Upgrade”** in order to launch the update process.



Once the update process is finished, click on **“Finish”**.

ACTUALIZACION EZEE'TAB 8D1-S

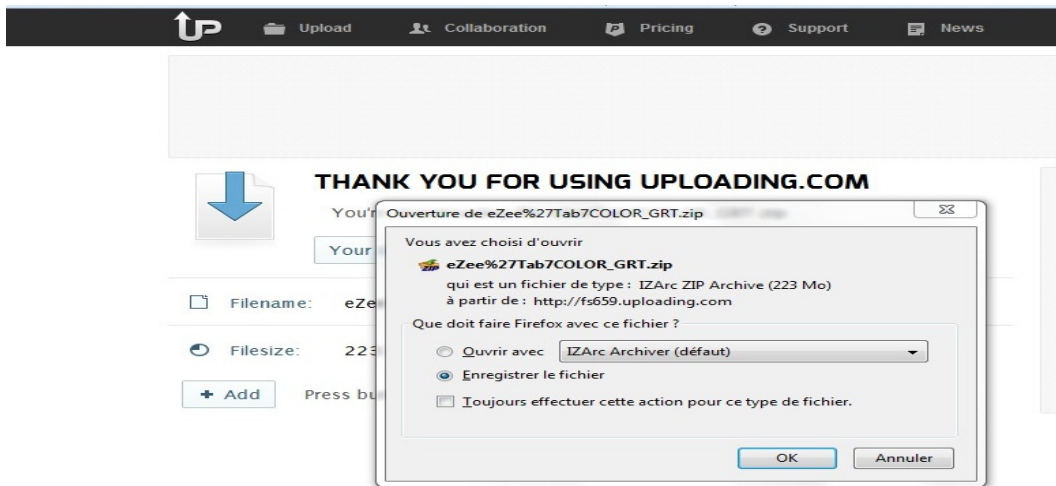
descargue el archivo de actualización en el siguiente enlace:

www.storex.eu/download/fw/A23_D801HC_D801HC_1403022_20140403_8D11-S.rar

Descargue el software de actualización:

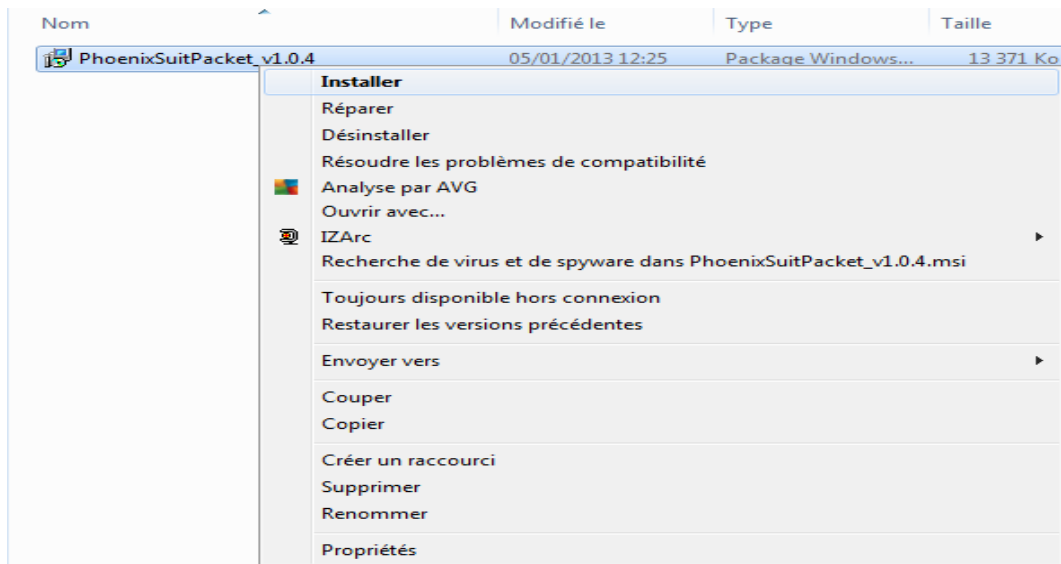
http://www.mediafire.com/download/xv2ha4w7srxf49h/PhoenixSuitPacket_v1.0.6.zip

Abre una ventana seleccione **"Guardar archivo"** preferentemente guarde el archivo en su escritorio

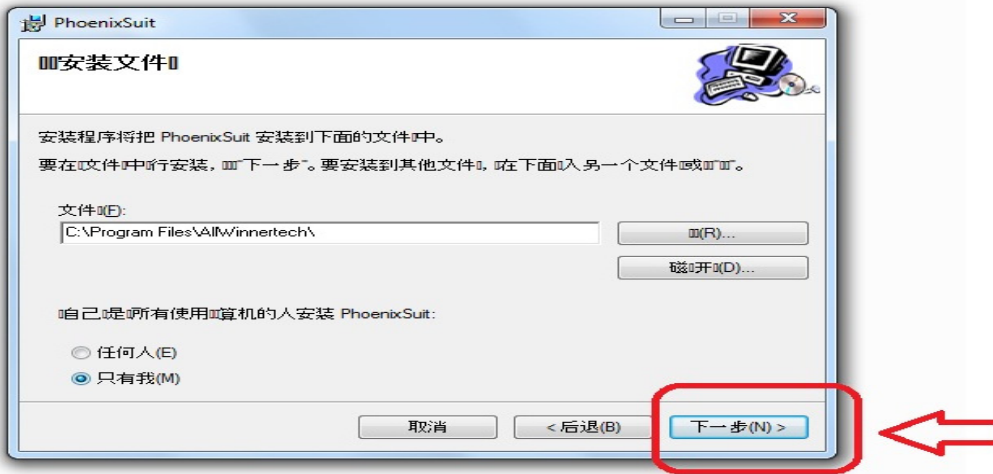


Para obtener más ayuda, copiar la carpeta en el escritorio de su pc y luego descomprimir.

1. Clic en la aplicación "**PhenixSuitPacket_V1.06**" y luego instalar.

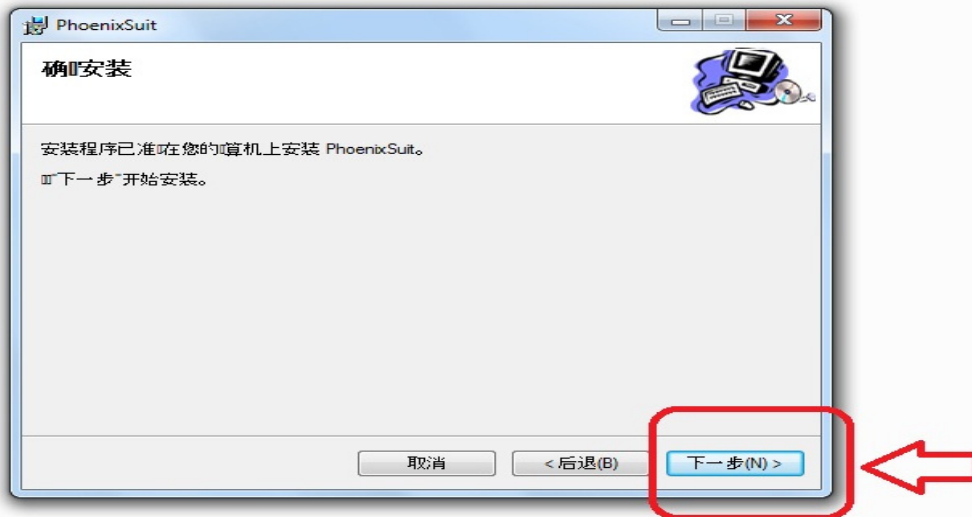


Nom	Modifié le	Type	Taille
PhoenixSuitPacket_v1.0.4	05/01/2013 12:25	Package Windows...	13 371 Ko



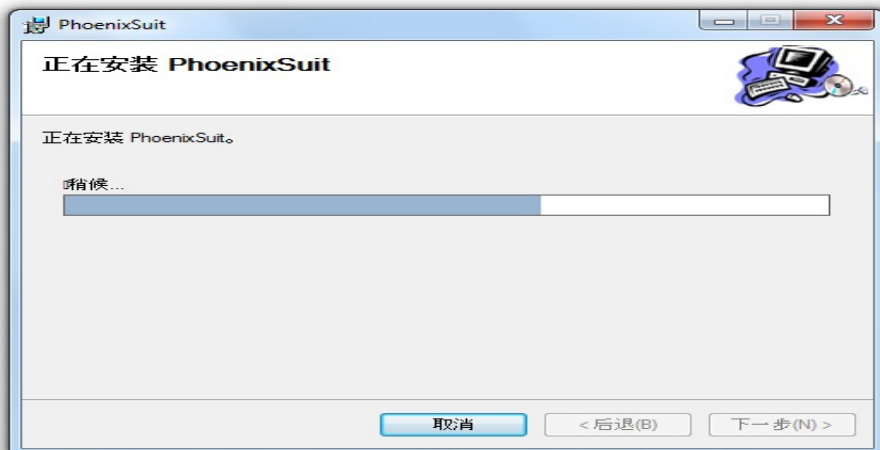
Haga clic en "flecha roja".

Nom	Modifié le	Type	Taille
PhoenixSuitPacket_v1.0.4	05/01/2013 12:25	Package Windows...	13 371 Ko

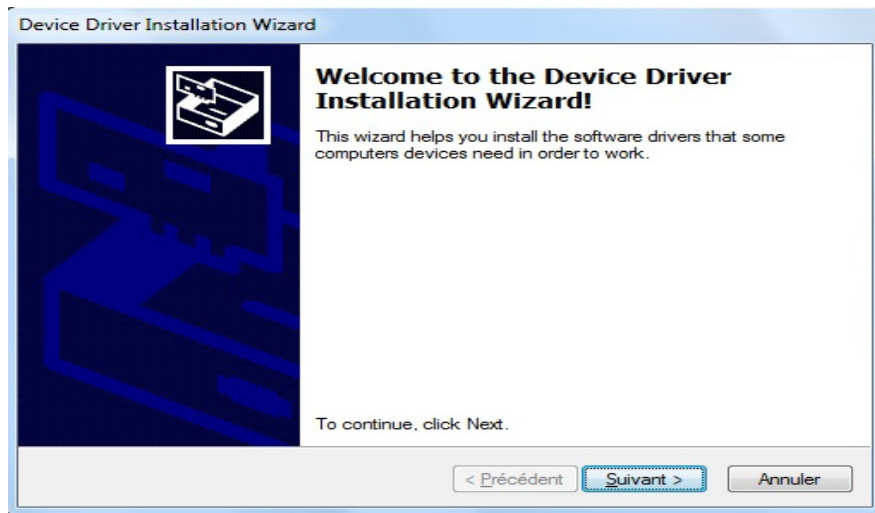


Se mostrará el proceso de instalación.

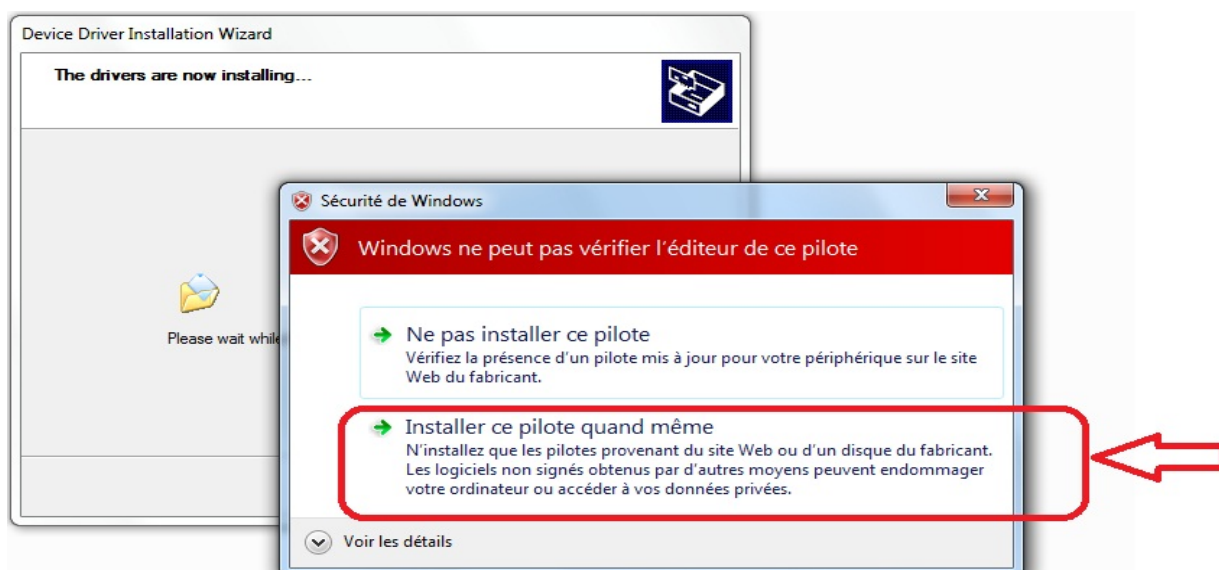
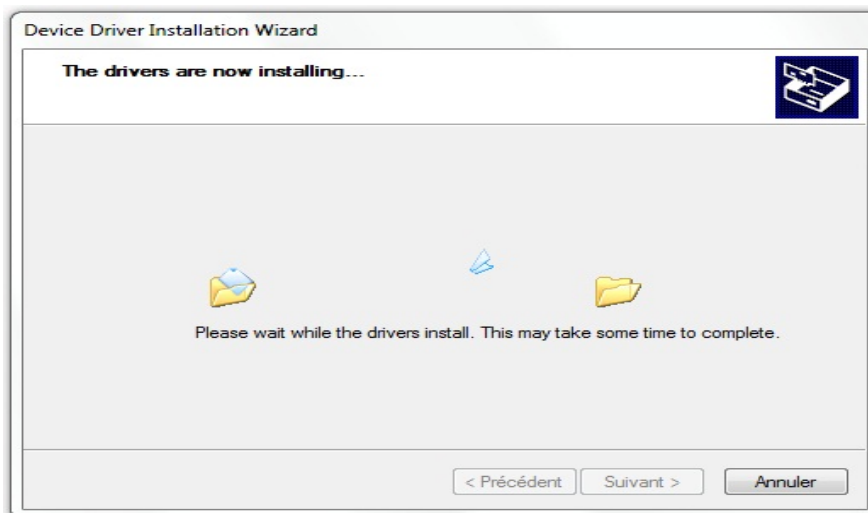
Nom	Modifié le	Type	Taille
PhoenixSuitPacket_v1.0.4	05/01/2013 12:25	Package Windows...	13 371 Ko



Entonces comenzará la instalación del paquete PhoenixSuit.



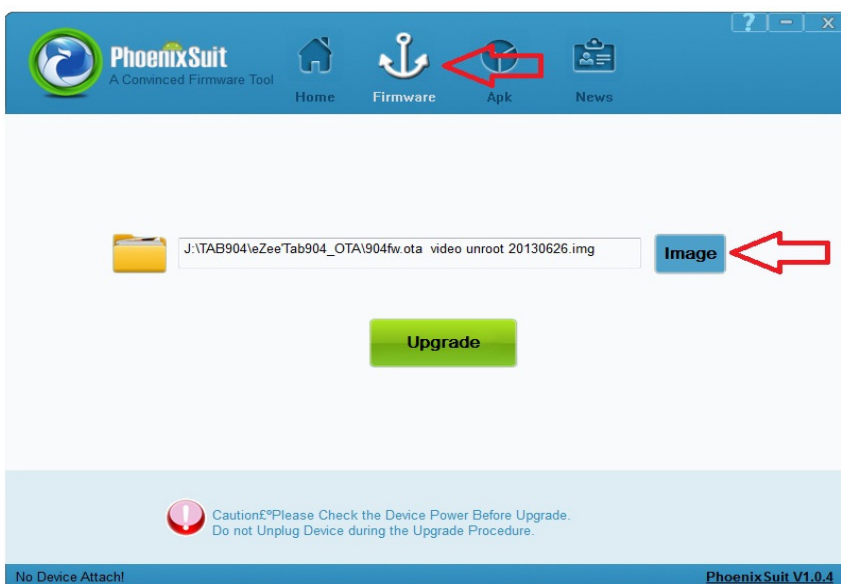
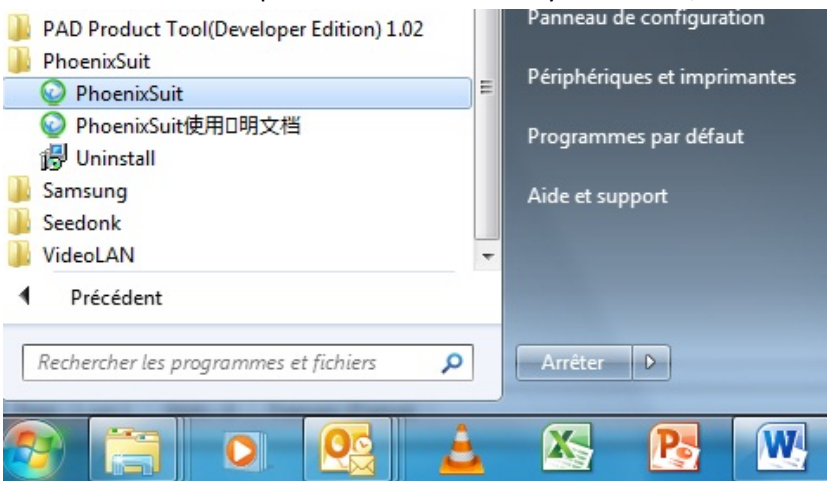
Haga clic en "Siguiete" y elija "Instalar controladores de todos modos".



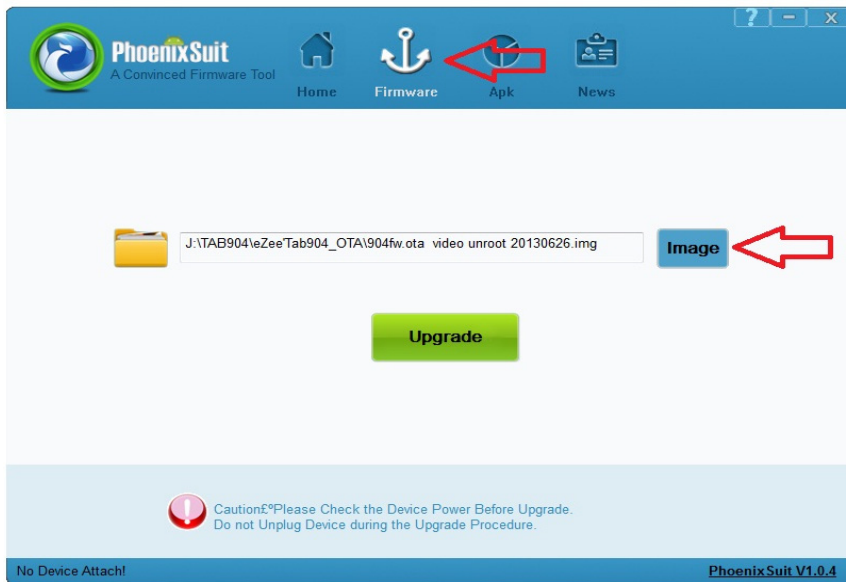


Haga clic en "Finish".

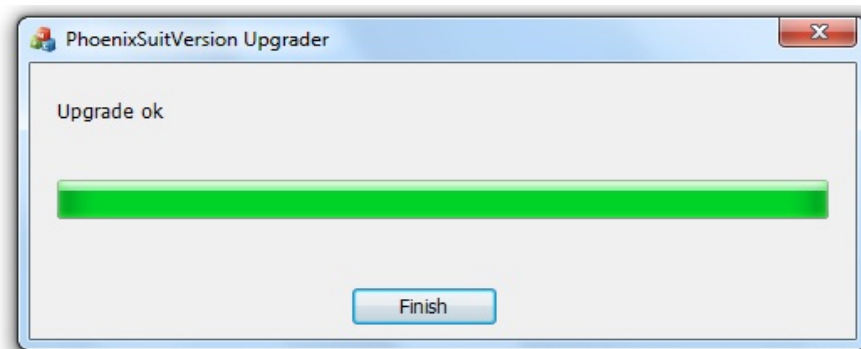
Una vez instalada la aplicación PhoenixSuit vaya a "Inicio", "todos los programas" luego ejecutar Phoenixsuit.



Seleccione la imagen 'A23_D801HC_D801HC_1403022_20140403_8D11-S.img'.



Haga clic en "**Actualizar**" para iniciar el proceso de actualización.



Una vez finalizado el proceso de actualización, haga clic en "**Finish**".

ATUALIZAÇÃO EZEE'TAB 8D11-S

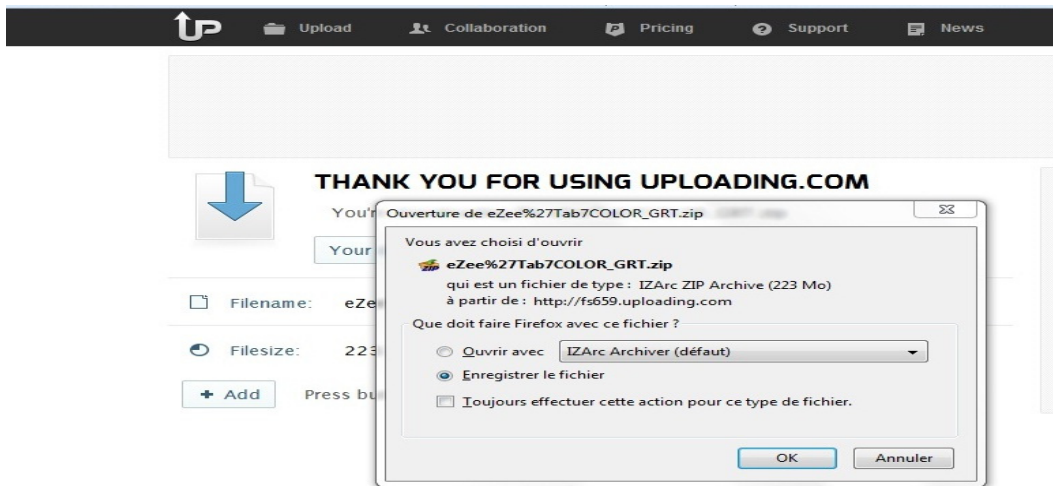
Baixe arquivo de atualização no link abaixo:

www.storex.eu/download/fw/A23_D801HC_D801HC_1403022_20140403_8D11-S.rar

Baixe o software de atualização:

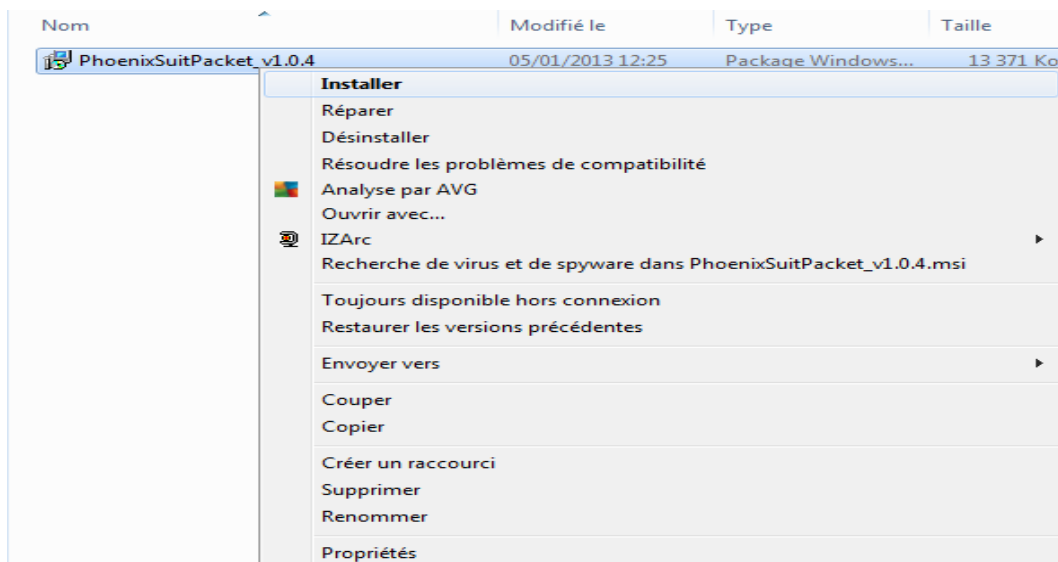
http://www.mediafire.com/download/xv2ha4w7srx49h/PhoenixSuitPacket_v1.0.6.zip

Abre uma janela, selecione '**salvar arquivo**' de preferência salve o arquivo no seu desktop.



Para obter mais ajuda, copie a pasta no desktop do seu pc e em seguida descompacte.

1. Clique sobre o aplicativo "**PhenixSuitPacket_V1.06**" e em seguida instalar.

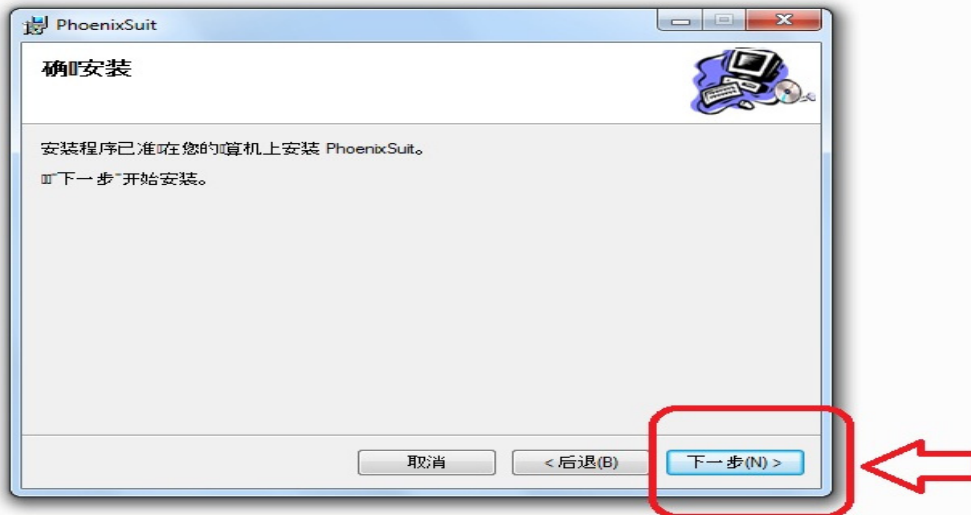


Nom	Modifié le	Type	Taille
PhoenixSuitPacket_v1.0.4	05/01/2013 12:25	Package Windows...	13 371 Ko



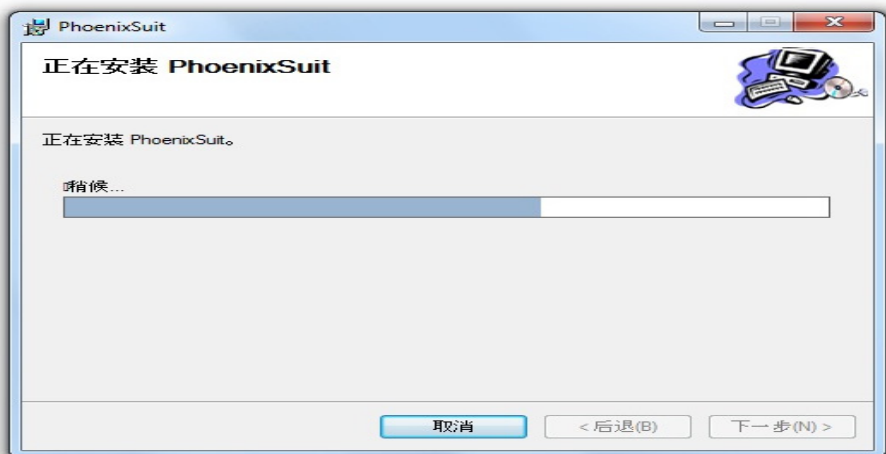
Clique na “seta vermelha”.

Nom	Modifié le	Type	Taille
PhoenixSuitPacket_v1.0.4	05/01/2013 12:25	Package Windows...	13 371 Ko

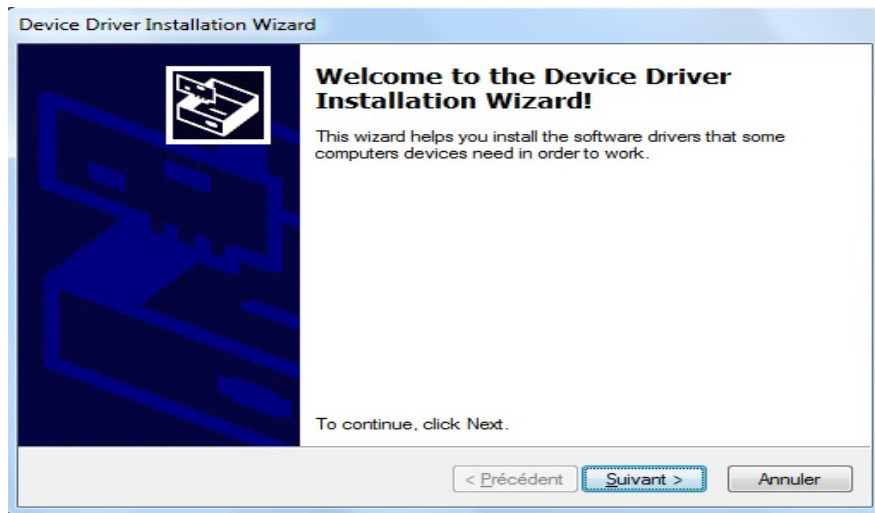


O processo de irá iniciar-se.

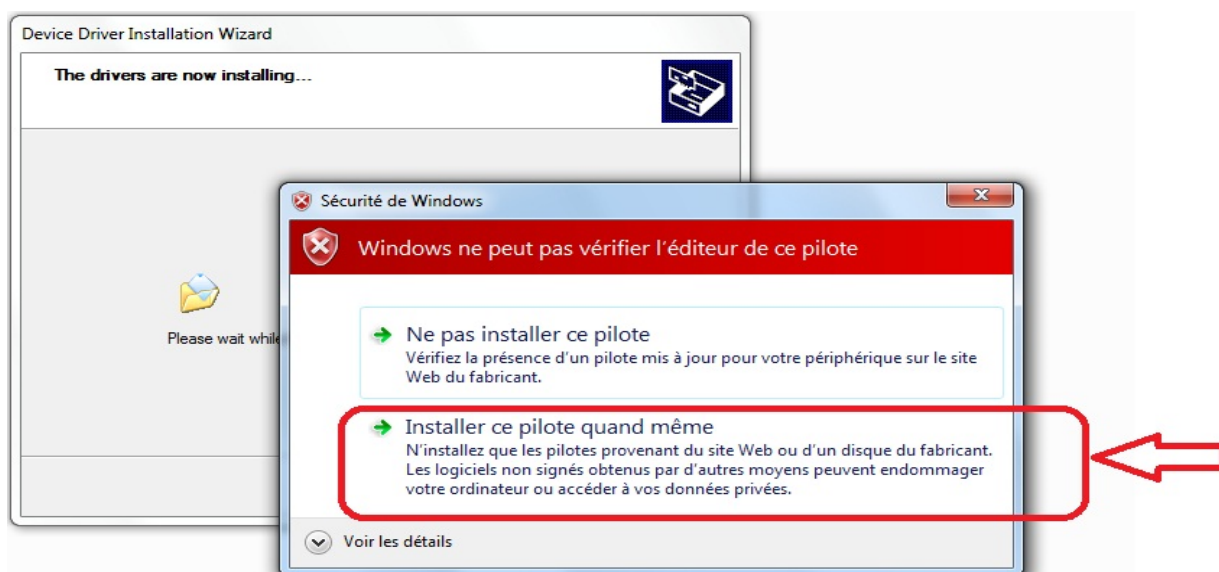
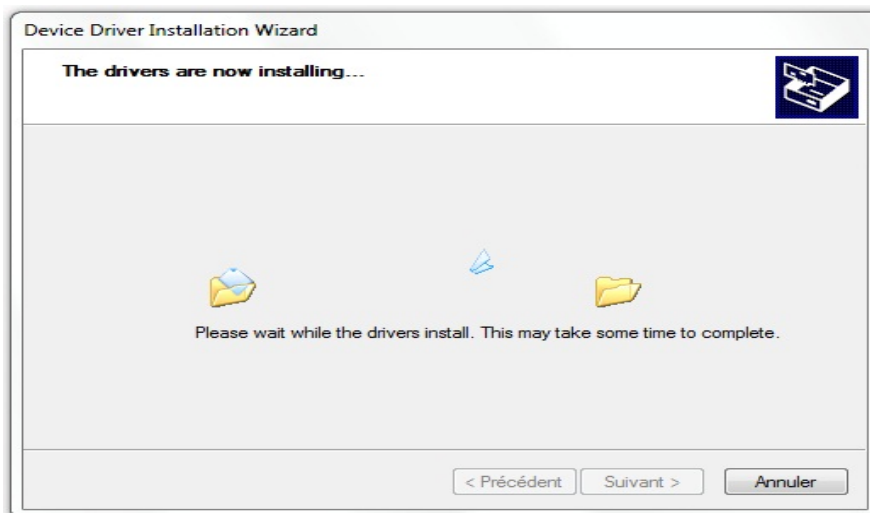
Nom	Modifié le	Type	Taille
PhoenixSuitPacket_v1.0.4	05/01/2013 12:25	Package Windows...	13 371



Em seguida começará a instalação do pacote PhoenixSuit.



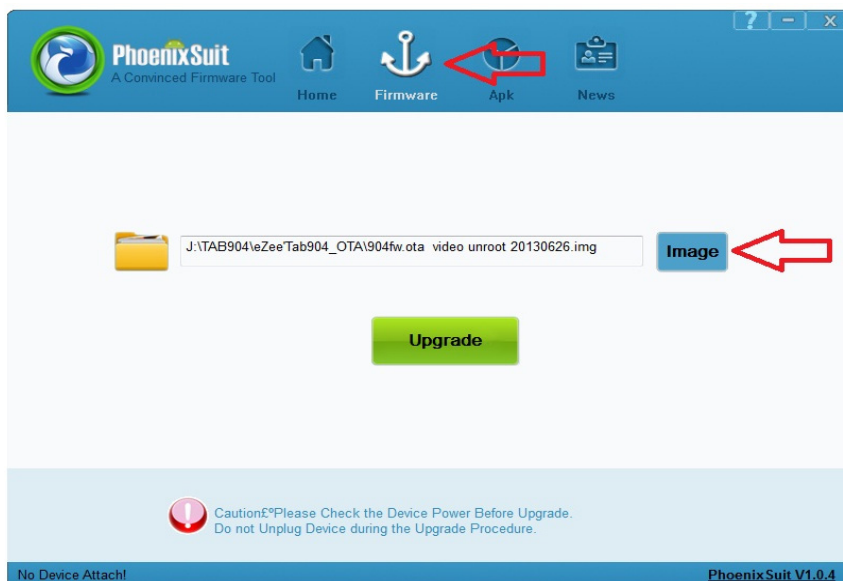
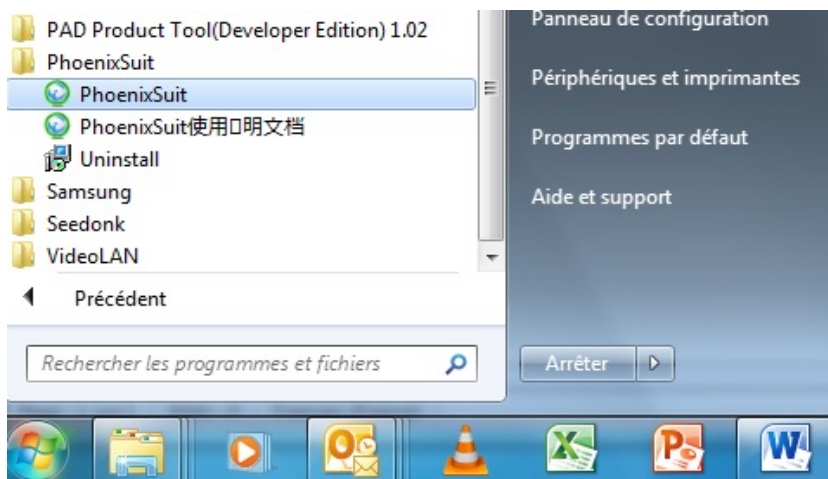
Clique em "Seguinte" e escolha "Instalar os drivers de qualquer maneira".



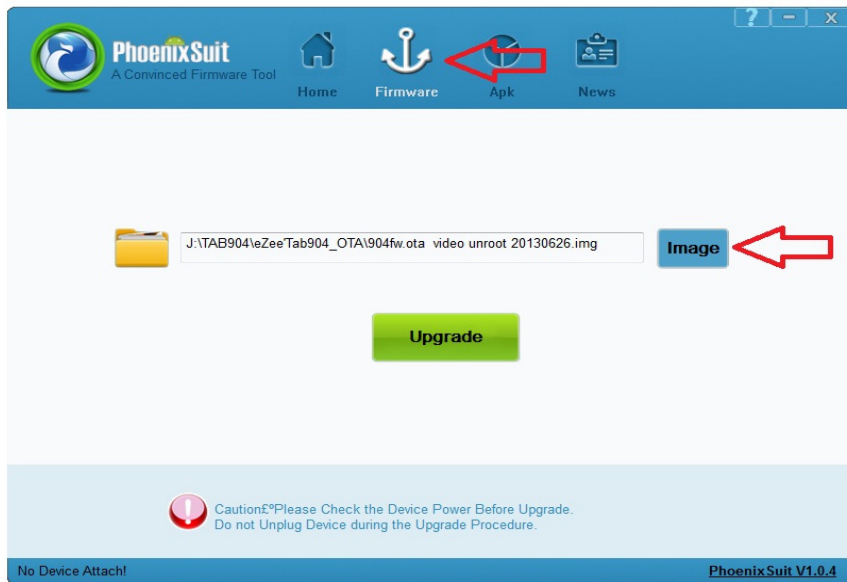


Carregue sob "Terminar".

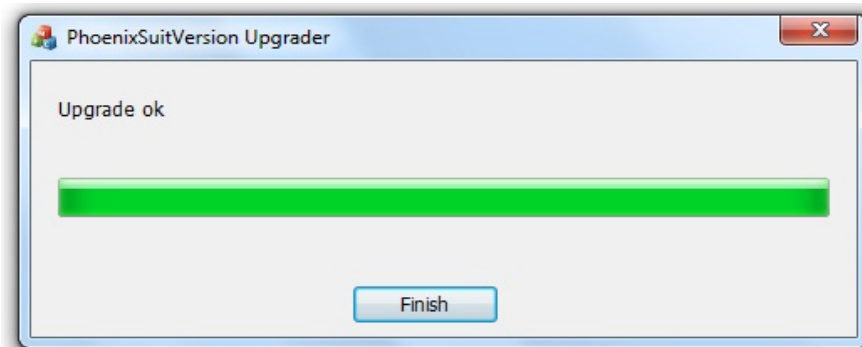
Uma vez instalado o aplicativo PhoenixSuit, selecione "Iniciar", "todos os programas", em seguida, execute Phoenixsuit.



Selecione a imagem de «A23_D801HC_D801HC_1403022_20140403_8D11-S.img».



Carregue sob **“Upgrade”** para iniciar o processo de atualização.



Uma vez o processo terminado carregue sob **“Terminar”**.